



# Product Guide

860-963-3377

[www.kocherk.com](http://www.kocherk.com)

CAPS & PLUGS STORZ FITTINGS FLANGES  
STRAINERS NOZZLES HYDRANT FITTINGS  
ADAPTERS ELBOWS DRY HYDRANT FITTINGS  
PVC SUCTION HOSE STORZ FITTINGS  
CAM-LOCK THREADED ADAPTERS &  
MANIFOLDS COUPLINGS WRENCHES  
SPANNERS LDH BOOSTER HOSE ATTACK HOSE  
VALVES SIAMESE MOUNTING PLATES JET SIPHON  
INSTANTANEOUS HOSE ACCESSORIES  
VALVES SUCTION ELBOWS  
GAUGES



## FIRE SERVICE

<b>ACCESSORIES</b> .....	4-5
<b>ADAPTERS</b>	
Threaded.....	6-15
Storz.....	16-18
Camlock.....	19
British Instantaneous.....	20
2-in-1.....	20
<b>CAPS and PLUGS</b> .....	21-25
<b>DRY HYDRANTS</b> .....	26-28
<b>ELBOWS</b>	
Threaded.....	29
Storz.....	30-31
Suction.....	32
<b>FLANGES</b> .....	33
<b>HAZMAT</b> .....	34
<b>HOSE</b>	
Attack Hose.....	34
Booster Hose.....	35
LDH.....	35-36
Soft Suction Hose.....	36
PVC Suction Hose.....	37
Hose Accessories.....	36
<b>HOSE COUPLINGS</b> .....	38
<b>HYDRANT CONVERTERS</b> .....	39
<b>NOZZLES and TIPS</b> .....	40
<b>SPANNERS and WRENCHES</b> .....	41
<b>STRAINERS</b>	
Floating .....	42
Barrel.....	42
Low Level.....	43
Box.....	43
Basement.....	43
Ice.....	43

## VALVES

Gate.....	44-45
Siamese.....	46
Ball.....	47
Manifold.....	48
Intake.....	48
Hydrant.....	48
Butterfly.....	49

<b>WATER TRANSFER</b> .....	49
-----------------------------	----

## WATER WORKS

<b>STORZ FD CONNECTIONS</b> .....	50
<b>ELBOWS</b> .....	51-52
<b>ESCUTCHEON PLATES</b> .....	53
<b>SLEEVES</b> .....	53
<b>MANIFOLDS</b> .....	54

## TAPER FLOW VALVES.....

<b>WARRANTY</b> .....	55
-----------------------	----

## ORDERING

- Use part number and description when placing an order.
- All orders must be submitted in writing to Kochek.
- Verbal orders will not be accepted.
- Minimum quantities and charges may be applied for non-standard finishes, special treads or laser engravings

## CONFIRMATIONS

- All orders will be confirmed, in writing, by Kochek.
- Confirmation of order receipt and entry not challenged within two (2) business days after date sent from our system shall mean that order as entered is valid.
- Be sure to keep a valid email address for sales order acknowledgements up to date with your Kochek sales representative.

## TAXES

- All prices and quotations are subject to CT tax law.

## DELIVERY

- All shipments F.O.B. Putnam, CT
- Contact your Regional Sales Manager or Inside Sales Representative for your freight policy.

## RETURNS

- No product returns will be accepted without prior consent of the Kochek Company, LLC via the RMA process.
- All returns will be subject to a minimum 20% restocking charge plus applicable shipping charges.
- All authorized returns shall have a Returned Material Authorization (RMA) number and it shall be written clearly on the BOL and package(s).
- All packages received for return without an (RMA) number will be returned to the sender, and shipping fees will be the responsibility of the sender.
- ALL (RMA) numbers issued shall be valid for a period of thirty (30) days; wherein product must be returned during this time period, or else the RMA will be closed.
- Non-stock, custom fabricated and custom laser etched parts are not returnable, unless due to manufacturing, assembly or material defect.
- Product returned under an RMA must be packaged properly and returned safely for proper evaluation. Failure to do so may result in the RMA being rejected.

## PRICING AND TERMS

- While it is our intent to provide adequate notice of price and terms changes, due to unforeseen market conditions and circumstances, prices and terms herein are subject to change without prior notice.

Scan our QR with your device to link directly to Kochek's Product Guide.

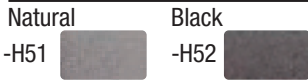


## Finishes

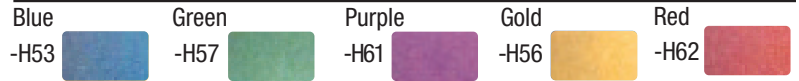
### HARDCOAT

High quality durable finish that is most often specified. Highly abrasion resistant. Conforms to MIL-A-8625F Type III standard.

#### Standard Colors



#### \* Special Colors



### POWDER COAT

A polymer resin based dry finish available in a variety of colors.

#### Standard Colors



\* Special Colors Include: Lavender, Light Burgundy, Yellow/lime, Almond and Bronze

### ANODIZE

Provides excellent corrosion resistance and conforms to MIL-A-8625F Type II standard.

#### Standard Colors



#### \* Special Colors



### KBRITE (-KBR)

KBrite is a tumbled and polished aluminum process with no coatings applied.

### CHROME (-C)

Chrome is plated over a bright nickel layer to achieve a hard, uniform finish that is both lustrous and extremely reflective.

### BRASS (-B)

Decorative brass is a thin layer plated over bright nickel where a reflective gold-colored finish is desired.

Brass plating is used to protect objects from corrosion.

### UNPLATED (-UNP)

#### \* SPECIAL COLORS

Available upon request. Minimum quantity orders and fees may apply. Call customer service for more information.

## STANDARD THREADS

- Standard Threads are National Standard (NH or NST)
- Straight Iron Pipe (NPSH, IPT, or SIPT)
- Garden hose (GHT)
- Tapered Iron Pipe (NPT, TPT, OR TIPT)

## \*SPECIAL THREADS

Special threads are available on parts 1" to 6"

- \* Available upon request. Minimum quantity orders and fees may apply to special threads and laser etching.
- Call customer service for more information.

## \*LASER ETCHING

Custom logo laser etching is available

## Ordering Information:

A suffix needs to be added to all Part Numbers when placing orders for finish type and color (see below).

For coating selection please select the 2 digit suffix for all orders.

Proper descriptors: powder coat (-Pxx), hardcoat anodized (-Hxx), anodized (-Axx) color code or use (-KBR) for KBrite.

### EXAMPLE FOR A STANDARD COLOR PART ORDERED:

1" x 1" Double Female Swivel – P/N 35R11 ordered in **Black** Hard Coat would be P/N **35R11 -H52**

### SAME PART ORDERED IN SAFETY YELLOW POWDER COAT:

P/N **35R11 -P11** (the **-P11** is designation for Powder Coat **Safety Yellow**)

## Gaskets



Part Number	Size & Description
<b>NH Gaskets</b>	
G105-A	1" NH Gasket
G155-A	1.5" NH Gasket
G205	2" NH Gasket
G255-A	2.5" NH Gasket
G305	3" NH Gasket
G355	3.5" NH Gasket
G405-A	4" NH Gasket
G455	4.5" NH Gasket
G505	5" NH Gasket
G605	6" NH Gasket
<b>NPSH Gaskets</b>	
G156	1.5" NPSH Gasket
G206	2" NPSH Gasket
G256	2.5" NPSH Gasket
G306	3" NPSH Gasket
G406	4" NPSH Gasket
G606	6" NPSH Gasket
<b>BSP Gaskets</b>	
G153	1.5" BSP Gasket
G203	2" BSP Gasket
G253	2.5" BSP Gasket
G403	4" BSP Gasket
G503	5" BSP Gasket
<b>Storz Pressure Gaskets</b>	
G158	1.5" Storz Pressure Gasket
G208	2" Storz Pressure Gasket
G258	2.5" Storz Pressure Gasket
G308	3" Storz Pressure Gasket
G408	4" Storz Pressure Gasket
G508	5" Storz Pressure Gasket
G608	6" Storz Pressure Gasket
<b>Storz Suction Gaskets</b>	
G209	2" Storz Suction Gasket
G259	2.5" Storz Suction Gasket
G309	3" Storz Suction Gasket
G409	4" Storz Suction Gasket
G509	5" Storz Suction Gasket
G609	6" Storz Suction Gasket

## ST2 Valve & Adapter Lubricant



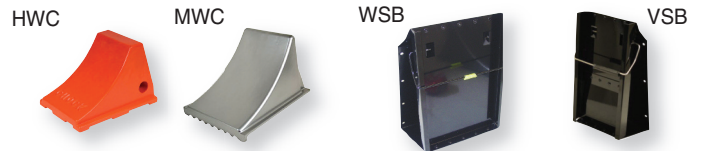
Part Number	Size & Description
ST2	Btl's Valve & Adapter Lubricant, Box of 12, 2oz.
ST2-12OZ	Single 12oz. Btl Valve & Adapter Lubricant

## Suction Screens



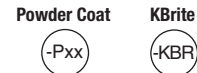
Part Number	Size & Description
G403-SC4	4" BSP Integrally Molded Gasket Screen Disc SS
G503-SC5	5" BSP Integrally Molded Gasket Screen Disc SS
SC5025	2.5" Suction Screen ABS, 2.64" OD
SC503	3" Suction Screen ABS, 3.31" OD
SC504	4" Suction Screen ABS, 4.30" OD
SC5045	4.5" Suction Screen ABS, 4.75" OD
SC505	5" Suction Screen ABS, 5.25" OD
SC506	6" Suction Screen ABS, 6.23" OD

## Wheel Chocks



### Finishes

See page 3 for color chart and proper ordering information.



Part Number	Size & Description
<b>Rubber (Sold Individually)</b>	
HWC	8" x 7" x 10" (Heavy Duty) Rubber Wheel Chock
<b>Aluminum (Sold Individually)</b>	
SWC	8" x 8.5" x 12" (Standard) Aluminum Wheel Chock
MWC	7" x 6" x 12" (Medium) Aluminum Wheel Chock
<b>Storage Bracket For Wheel Chocks</b>	
VSB	Vertical Storage Bracket, Wall Style (Standard)
WSB	Horizontal Storage Bracket, Wide Mount Surface (Standard)
VSBM	Vertical Storage Bracket, Wall Style (Medium)
WSBM	Horizontal Storage Bracket, Wide Mount Surface (Medium)

## Hydrant Flushing Elbow



### Finishes

See page 3 for color chart and proper ordering information.



Part Number	Size & Description
HFE25	2.5" NH Female Hydrant Flushing Elbow
HFE45	4.5" NH Female Hydrant Flushing Elbow

SIZE	Part Number	Finishes				
		<i>See page 3 for color chart and proper ordering information.</i>				
<b>NH Male Mounting Plates</b>						
1"	MM101	<b>Chrome</b> (-C) <b>Powder Coat</b> (-Pxx) <b>KBrite</b> (-KBR) <b>Hardcoat</b> (-Hxx) <b>Anodized</b> (-Axx)				
1.5"	MM1501					
2"	MM201					
2.5"	MM2501					
3"	MM301					
3.5"	MM3501					
4"	MM401					
4.5"	MM4501					
5"	MM501					
<b>NH Female Mounting Plates</b>						
1"	MF101	<b>Chrome</b> (-C) <b>Powder Coat</b> (-Pxx) <b>KBrite</b> (-KBR) <b>Hardcoat</b> (-Hxx) <b>Anodized</b> (-Axx)				
1.5"	MF1501					
2"	MF201					
2.5"	MF2501					
3"	MF301					
3.5"	MF3501					
4"	MF401					
4.5"	MF4501					
5"	MF501					
<b>Storz Mounting Plates</b>						
4" or 5"	MF507	<b>Chrome</b> (-C) <b>Powder Coat</b> (-Pxx) <b>KBrite</b> (-KBR) <b>Hardcoat</b> (-Hxx) <b>Anodized</b> (-Axx)				
6"	MF607					



MF507: available in -PXX and -KBR only

<b>Storz Locking Assembly</b>		
4" or 5"	SLD5	Stainless Steel and includes lock, screw and spring

<b>Line Gauges (Glycerin Filled Gauge 0-300lbs.)</b>		
Part Number	Size & Description	
LG15	1.5" Line Gauge - Threaded	<b>Chrome</b> (-C) <b>Powder Coat</b> (-Pxx) <b>KBrite</b> (-KBR) <b>Hardcoat</b> (-Hxx) <b>Anodized</b> (-Axx)
LG25	2.5" Line Gauge - Threaded	
LG30	3" Line Gauge - Threaded	
LG35	3.5" Line Gauge-Threaded	
LG407	4" Line Gauge - Storz	
LG507	5" Line Gauge - Storz	



LG15 - Gauge Does Not Come Protected

SIZE		Part Number	Finishes				
Female RL Swivel NH Thread	Female RL Swivel NH Thread		<i>See page 3 for color chart and proper ordering information.</i>				
<b>35R &amp; 35-BG Double Female Swivel Rocker Lug</b>							
1"	1"	35R11	<div style="display: flex; justify-content: space-around; align-items: center;"> <div style="text-align: center;"> <p>Chrome</p> <p>(-C)</p> </div> <div style="text-align: center;"> <p>Powder Coat</p> <p>(-Pxx)</p> </div> <div style="text-align: center;"> <p>KBrite</p> <p>(-KBR)</p> </div> <div style="text-align: center;"> <p>Hardcoat</p> <p>(-Hxx)</p> </div> <div style="text-align: center;"> <p>Anodized</p> <p>(-Axx)</p> </div> </div>				
1.5"	1"	35R151					
1.5"	1.5"	35R1515					
2"	1.5"	35R215					
2"	2"	35R22					
2.5"	1.5"	35R2515					
2.5"	2"	35R252					
2.5"	2.5"	35R2525					
3"	2.5"	35R325					
3"	3"	35R33					
3.5"	2.5"	35R3525					
3.5"	3"	35R353					
3.5"	3.5"	35R3535					
4"	2.5"	35R425					
4"	3"	35R43					
4"	3.5"	35R435					
4"	4"	35R44					
4.5"	2.5"	35R4525					
4.5"	3"	35R453					
4.5"	3.5"	35R4535					
4.5"	4"	35R454					
4.5"	4.5"	35R4545					
5"	2.5"	35R525					
5"	3"	35R53					
5"	3.5"	35R535					
5"	4"	35R54					
5"	4.5"	35R545					
5"	5"	35R55					
6"	2.5"	35R625					
6"	3"	35R63					
6"	3.5"	35R635					
6"	4"	35R64					
6"	4.5"	35R645					
6"	5"	35R65					
6"	6"	35R66					
<b>35R-BG Double Female Swivel Rocker Lug (Ball Groove Design)</b>							
1.5"	1.5"	35R1515-BG	Chrome (-C)	Powder Coat (-Pxx)	KBrite (-KBR)	Hardcoat (-Hxx)	Anodized (-Axx)
2.5"	2.5"	35R2525-BG					

35R2525-P18



SIZE		Part Number	Finishes
Male RL NH Thread	Male RL NH Thread		
<i>See page 3 for color chart and proper ordering information.</i>			
<b>36R Double Male Rocker Lug</b>			
1"	GHT	36R1G	
1"	1"	36R11	
1.5"	GHT	36R15G	
1.5"	1"	36R151	
1.5"	1.5"	36R1515	
2"	GHT	36R2G	
2"	1"	36R21	
2"	1.5"	36R215	
2"	2"	36R22	
2.5"	GHT	36R25G	
2.5"	1"	36R251	
2.5"	1.5"	36R2515	
2.5"	2"	36R252	
2.5"	2.5"	36R2525	
3"	2"	36R32	
3"	2.5"	36R325	
3"	3"	36R33	
3.5"	2.5"	36R3525	
3.5"	3"	36R353	
3.5"	3.5"	36R3535	
4"	2.5"	36R425	
4"	3"	36R43	
4"	3.5"	36R435	
4"	4"	36R44	
4.5"	2.5"	36R4525	
4.5"	3"	36R453	
4.5"	3.5"	36R4535	
4.5"	4"	36R454	
4.5"	4.5"	36R4545	
5"	2.5"	36R525	
5"	3"	36R53	
5"	3.5"	36R535	
5"	4"	36R54	
5"	4.5"	36R545	
5"	5"	36R55	
6"	4"	36R64	
6"	4.5"	36R645	
6"	5"	36R65	
6"	6"	36R66	

- Chrome  
(-C)
- Powder Coat  
(-Pxx)
- KBrite  
(-KBR)
- Hardcoat  
(-Hxx)
- Anodized  
(-Axx)

36R2525-P18



SIZE		Part Number	Finishes
Female RL NH Thread	Male RL NH Thread		
<i>See page 3 for color chart and proper ordering information.</i>			
<b>37R Rigid Rocker Lug Female x Male</b>			
GHT	GHT	37RGG	
GHT	1"	37RG1	
GHT	1.5"	37RG15	
GHT	2"	37RG2	
GHT	2.5"	37RG25	
1"	GHT	37R1G	
1"	1"	37R11	
1"	1.5"	37R115	
1"	2"	37R12	
1"	2.5"	37R125	
1.5"	GHT	37R15G	
1.5"	1"	37R151	
1.5"	1.5"	37R1515	
1.5"	2"	37R152	
1.5"	2.5"	37R1525	
1.5"	3"	37R153	
2"	GHT	37R2G	
2"	1"	37R21	
2"	1.5"	37R215	
2"	2"	37R22	
2"	2.5"	37R225	
2"	3"	37R23	
2.5"	GHT	37R25G	
2.5"	1"	37R251	
2.5"	1.5"	37R2515	
2.5"	2"	37R252	
2.5"	2.5"	37R2525	
2.5"	3"	37R253	
2.5"	3.5"	37R2535	
2.5"	4"	37R254	
2.5"	4.5"	37R2545	
2.5"	5"	37R255	
2.5"	6"	37R256	
3"	1.5"	37R315	
3"	2"	37R32	
3"	2.5"	37R325	
3"	3"	37R33	
3"	3.5"	37R335	
3"	4"	37R34	
3"	4.5"	37R345	
3"	5"	37R35	
3"	6"	37R36	
3.5"	2.5"	37R3525	
3.5"	3"	37R353	
3.5"	3.5"	37R3535	
3.5"	4"	37R354	
3.5"	4.5"	37R3545	
3.5"	5"	37R355	
3.5"	6"	37R356	

- Chrome  
-C
- Powder Coat  
-Pxx
- KBrite  
-KBR
- Hardcoat  
-Hxx
- Anodized  
-Axx

37R2515-C



37R2515-P18



Continued >

SIZE		Part Number	Finishes				
Female RL NH Thread	Male RL NH Thread		<i>See page 3 for color chart and proper ordering information.</i>				
<b>37R Rigid Rocker Lug Female x Male</b>							
4"	2.5"	37R425	<div style="display: flex; justify-content: space-around; align-items: center;"> <div style="text-align: center;"> <p>Chrome</p> </div> <div style="text-align: center;"> <p>Powder Coat</p> </div> <div style="text-align: center;"> <p>KBrite</p> </div> <div style="text-align: center;"> <p>Hardcoat</p> </div> <div style="text-align: center;"> <p>Anodized</p> </div> </div>				
4"	3"	37R43					
4"	3.5"	37R435					
4"	4"	37R44					
4"	4.5"	37R445					
4"	5"	37R45					
4"	6"	37R46					
4.5"	2.5"	37R4525					
4.5"	3"	37R453					
4.5"	3.5"	37R4535					
4.5"	4"	37R454					
4.5"	4.5"	37R4545					
4.5"	5"	37R455					
4.5"	6"	37R456					
5"	2.5"	37R525					
5"	3"	37R53					
5"	3.5"	37R535					
5"	4"	37R54					
5"	4.5"	37R545					
5"	5"	37R55					
5"	6"	37R56					
6"	2.5"	37R625					
6"	3"	37R63					
6"	3.5"	37R635					
6"	4"	37R64					
6"	4.5"	37R645					
6"	5"	37R65					
6"	6"	37R66					

37R2515-C



37R2515-P18



SIZE		Part Number	Finishes
Female LH Swivel NH Thread	Female RL Rigid NH Thread		
<i>See page 3 for color chart and proper ordering information.</i>			
<b>53L Swivel Long Handle Female x Rigid Rocker Lug Female</b>			
2.5"	1.5"	53L2515	
2.5"	2"	53L252	
2.5"	2.5"	53L2525	
2.5"	3"	53L253	
2.5"	3.5"	53L2535	
2.5"	4"	53L254	
2.5"	4.5"	53L2545	
2.5"	5"	53L255	
2.5"	6"	53L256	
3"	2.5"	53L325	
3"	3"	53L33	
3"	3.5"	53L335	
3"	4"	53L34	
3"	4.5"	53L345	
3"	5"	53L35	
3"	6"	53L36	
3.5"	2.5"	53L3525	
3.5"	3"	53L353	
3.5"	3.5"	53L3535	
3.5"	4"	53L354	
3.5"	4.5"	53L3545	
3.5"	5"	53L355	
3.5"	6"	53L356	
4"	2.5"	53L425	
4"	3"	53L43	
4"	3.5"	53L435	
4"	4"	53L44	
4"	4.5"	53L445	
4"	5"	53L45	
4"	6"	53L46	
4.5"	2.5"	53L4525	
4.5"	3"	53L453	
4.5"	3.5"	53L4535	
4.5"	4"	53L454	
4.5"	4.5"	53L4545	
4.5"	5"	53L455	
4.5"	6"	53L456	
5"	2.5"	53L525	
5"	3"	53L53	
5"	3.5"	53L535	
5"	4"	53L54	
5"	4.5"	53L545	
5"	5"	53L55	
5"	6"	53L56	
6"	2.5"	53L625	
6"	3"	53L63	
6"	3.5"	53L635	
6"	4"	53L64	
6"	4.5"	53L645	
6"	5"	53L65	
6"	6"	53L66	

- Chrome  
(-C)
- Powder Coat  
(-Pxx)
- KBrite  
(-KBR)
- Hardcoat  
(-Hxx)
- Anodized  
(-Axx)

53L2525-C



53L2525-H52



SIZE		Part Number	Finishes
Female RL Swivel NH Thread	Female RL Rigid NH Thread		
<b>53R Swivel Rocker Lug Female x Rigid Rocker Lug Female</b>			
1.5"	1.5"	53R1515	<p><i>See page 3 for color chart and proper ordering information.</i></p>
1.5"	2"	53R152	
1.5"	2.5"	53R1525	
2"	1.5"	53R215	
2"	2"	53R22	
2"	2.5"	53R225	
2.5"	1.5"	53R2515	
2.5"	2"	53R252	
2.5"	2.5"	53R2525	
2.5"	3"	53R253	
2.5"	3.5"	53R2535	
2.5"	4"	53R254	
2.5"	4.5"	53R2545	
2.5"	5"	53R255	
2.5"	6"	53R256	
3"	2.5"	53R325	
3"	3"	53R33	
3"	3.5"	53R335	
3"	4"	53R34	
3"	4.5"	53R345	
3"	5"	53R35	
3"	6"	53R36	
3.5"	2.5"	53R3525	
3.5"	3"	53R353	
3.5"	3.5"	53R3535	
3.5"	4"	53R354	
3.5"	4.5"	53R3545	
3.5"	5"	53R355	
3.5"	6"	53R356	
4"	2.5"	53R425	
4"	3"	53R43	
4"	3.5"	53R435	
4"	4"	53R44	
4"	4.5"	53R445	
4"	5"	53R45	
4"	6"	53R46	
4.5"	2.5"	53R4525	
4.5"	3"	53R453	
4.5"	3.5"	53R4535	
4.5"	4"	53R454	
4.5"	4.5"	53R4545	
4.5"	5"	53R455	
4.5"	6"	53R456	
5"	2.5"	53R525	
5"	3"	53R53	
5"	3.5"	53R535	
5"	4"	53R54	
5"	4.5"	53R545	
5"	5"	53R55	
5"	6"	53R56	
6"	2.5"	53R625	
6"	3"	53R63	
6"	3.5"	53R635	
6"	4"	53R64	
6"	4.5"	53R645	
6"	5"	53R65	
6"	6"	53R66	

53R2525-H52



- Chrome  
-C
- Powder Coat  
-Pxx
- KBrite  
-KBR
- Hardcoat  
-Hxx
- Anodized  
-Axx

SIZE		Part Number	Finishes
Female LH Swivel NH Thread	Male RL NH Thread		
<i>See page 3 for color chart and proper ordering information.</i>			
<b>54L Swivel Long Handle Female x Male</b>			
2.5"	2.5"	54L2525	
2.5"	3"	54L253	
2.5"	3.5"	54L2535	
2.5"	4"	54L254	
2.5"	4.5"	54L2545	
2.5"	5"	54L255	
2.5"	6"	54L256	
3"	2.5"	54L325	
3"	3"	54L33	
3"	3.5"	54L335	
3"	4"	54L34	
3"	4.5"	54L345	
3"	5"	54L35	
3"	6"	54L36	
3.5"	2.5"	54L3525	
3.5"	3"	54L353	
3.5"	3.5"	54L3535	
3.5"	4"	54L354	
3.5"	4.5"	54L3545	
3.5"	5"	54L355	
3.5"	6"	54L356	
4"	2.5"	54L425	
4"	3"	54L43	
4"	3.5"	54L435	
4"	4"	54L44	
4"	4.5"	54L445	
4"	5"	54L45	
4"	6"	54L46	
4.5"	2.5"	54L4525	
4.5"	3"	54L453	
4.5"	3.5"	54L4535	
4.5"	4"	54L454	
4.5"	4.5"	54L4545	
4.5"	5"	54L455	
4.5"	6"	54L456	
5"	2.5"	54L525	
5"	3"	54L53	
5"	3.5"	54L535	
5"	4"	54L54	
5"	4.5"	54L545	
5"	5"	54L55	
5"	6"	54L56	
6"	2.5"	54L625	
6"	3"	54L63	
6"	3.5"	54L635	
6"	4"	54L64	
6"	4.5"	54L645	

- Chrome  
(-C)
- Powder Coat  
(-Pxx)
- KBrite  
(-KBR)
- Hardcoat  
(-Hxx)
- Anodized  
(-Axx)

54L4545-H51



SIZE		Part Number	Finishes
Female RL Swivel NH Thread	Male RL NH Thread		
			<i>See page 3 for color chart and proper ordering information.</i>
<b>54R Swivel Rocker Lug Female x Male</b>			
1.5"	1.5"	54R1515	
1.5"	2"	54R152	
1.5"	2.5"	54R1525	
2"	1.5"	54R215	
2"	2"	54R22	
2"	2.5"	54R225	
2.5"	1.5"	54R2515	
2.5"	2"	54R252	
2.5"	2.5"	54R2525	
2.5"	3"	54R253	
2.5"	3.5"	54R2535	
2.5"	4"	54R254	
2.5"	4.5"	54R2545	
2.5"	5"	54R255	
2.5"	6"	54R256	
3"	2.5"	54R325	
3"	3"	54R33	
3"	3.5"	54R335	
3"	4"	54R34	
3"	4.5"	54R345	
3"	5"	54R35	
3"	6"	54R36	
3.5"	2.5"	54R3525	
3.5"	3"	54R353	
3.5"	3.5"	54R3535	
3.5"	4"	54R354	
3.5"	4.5"	54R3545	
3.5"	5"	54R355	
3.5"	6"	54R356	
4"	2.5"	54R425	
4"	3"	54R43	
4"	3.5"	54R435	
4"	4"	54R44	
4"	4.5"	54R445	
4"	5"	54R45	
4"	6"	54R46	
4.5"	2.5"	54R4525	
4.5"	3"	54R453	
4.5"	3.5"	54R4535	
4.5"	4"	54R454	
4.5"	4.5"	54R4545	
4.5"	5"	54R455	
4.5"	6"	54R456	
5"	2.5"	54R525	
5"	3"	54R53	
5"	3.5"	54R535	
5"	4"	54R54	
5"	4.5"	54R545	
5"	5"	54R55	
5"	6"	54R56	
6"	2.5"	54R625	
6"	3"	54R63	
6"	3.5"	54R635	
6"	4"	54R64	
6"	4.5"	54R645	
6"	5"	54R65	
6"	6"	54R66	

54R2525-H52



- Chrome  
(-C)
- Powder Coat  
(-Pxx)
- KBrite  
(-KBR)
- Hardcoat  
(-Hxx)
- Anodized  
(-Axx)

SIZE		Part Number	Finishes
Female RL NH Thread	Male RL NH Thread		
			<i>See page 3 for color chart and proper ordering information.</i>
<b>56L Rigid Long Handle Female x Male</b>			
2.5"	2.5"	56L2525	<p> <span>Chrome</span>   <span>Powder Coat</span>   <span>KBrite</span>   <span>Hardcoat</span>   <span>Anodized</span>  <span>(-C)</span>   <span>(-Pxx)</span>   <span>(-KBR)</span>   <span>(-Hxx)</span>   <span>(-Axx)</span> </p>
2.5"	3"	56L253	
2.5"	3.5"	56L2535	
2.5"	4"	56L254	
2.5"	4.5"	56L2545	
2.5"	5"	56L255	
2.5"	6"	56L256	
3"	2.5"	56L325	
3"	3"	56L33	
3"	3.5"	56L335	
3"	4"	56L34	
3"	4.5"	56L345	
3"	5"	56L35	
3"	6"	56L36	
3.5"	2.5"	56L3525	
3.5"	3"	56L353	
3.5"	3.5"	56L3535	
3.5"	4"	56L354	
3.5"	4.5"	56L3545	
3.5"	5"	56L355	
3.5"	6"	56L356	
4"	2.5"	56L425	
4"	3"	56L43	
4"	3.5"	56L435	
4"	4"	56L44	
4"	4.5"	56L445	
4"	5"	56L45	
4"	6"	56L46	
4.5"	2.5"	56L4525	
4.5"	3"	56L453	
4.5"	3.5"	56L4535	
4.5"	4"	56L454	
4.5"	4.5"	56L4545	
4.5"	5"	56L455	
4.5"	6"	56L456	
5"	2.5"	56L525	
5"	3"	56L53	
5"	3.5"	56L535	
5"	4"	56L54	
5"	4.5"	56L545	
5"	5"	56L55	
5"	6"	56L56	
6"	2.5"	56L625	
6"	3"	56L63	
6"	3.5"	56L635	
6"	4"	56L64	
6"	4.5"	56L645	
6"	5"	56L65	
6"	6"	56L66	

56L645-H52



SIZE		Part Number	Finishes				
Female LH Swivel NH Thread	Female LH Swivel NH Thread		<i>See page 3 for color chart and proper ordering information.</i>				
<b>57L Double Female Swivel Long Handle</b>							
2.5"	2.5"	57L2525					
3"	2.5"	57L325					
3"	3"	57L33					
3.5"	2.5"	57L3525					
3.5"	3"	57L353					
3.5"	3.5"	57L3535					
4"	2.5"	57L425					
4"	3"	57L43					
4"	3.5"	57L435					
4"	4"	57L44					
4.5"	2.5"	57L4525					
4.5"	3"	57L453					
4.5"	3.5"	57L4535					
4.5"	4"	57L454					
4.5"	4.5"	57L4545					
5"	2.5"	57L525					
5"	3"	57L53					
5"	3.5"	57L535					
5"	4"	57L54					
5"	4.5"	57L545					
5"	5"	57L55					
6"	2.5"	57L625					
6"	3"	57L63					
6"	3.5"	57L635					
6"	4"	57L64					
6"	4.5"	57L645					
6"	5"	57L65					
6"	6"	57L66					

- Chrome  
(-C)
- Powder Coat  
(-Pxx)
- KBrite  
(-KBR)
- Hardcoat  
(-Hxx)
- Anodized  
(-Axx)

57L645-H52



SIZE		Part Number	Finishes
Storz	Male Rigid NH Thread		
			<i>See page 3 for color chart and proper ordering information.</i>

### S36S Storz x Rigid Male

Storz	Male Rigid NH Thread	Part Number	Chrome	Powder Coat	KBrite	Hardcoat	Anodized
2.5"	2.5"	S36S2525	-C	-Pxx	-KBR	-Hxx	-Axx
2.5"	3"	S36S253	-C	-Pxx	-KBR	-Hxx	-Axx
3"	2.5"	S36S325	-C	-Pxx	-KBR	-Hxx	-Axx
3"	3"	S36S33	-C	-Pxx	-KBR	-Hxx	-Axx
4"	2.5"	S36S425	-C	-Pxx	-KBR	-Hxx	-Axx
4"	3"	S36S43	-C	-Pxx	-KBR	-Hxx	-Axx
4"	3.5"	S36S435	-C	-Pxx	-KBR	-Hxx	-Axx
4"	4"	S36S44	-C	-Pxx	-KBR	-Hxx	-Axx
4"	4.5"	S36S445	-C	-Pxx	-KBR	-Hxx	-Axx
4"	5"	S36S45	-C	-Pxx	-KBR	-Hxx	-Axx
4"	6"	S36S46	-C	-Pxx	-KBR	-Hxx	-Axx
5"	2.5"	S36S525	-C	-Pxx	-KBR	-Hxx	-Axx
5"	3"	S36S53	-C	-Pxx	-KBR	-Hxx	-Axx
5"	3.5"	S36S535	-C	-Pxx	-KBR	-Hxx	-Axx
5"	4"	S36S54	-C	-Pxx	-KBR	-Hxx	-Axx
5"	4.5"	S36S545	-C	-Pxx	-KBR	-Hxx	-Axx
5"	5"	S36S55	-C	-Pxx	-KBR	-Hxx	-Axx
5"	6"	S36S56	-C	-Pxx	-KBR	-Hxx	-Axx
6"	4"	S36S64	-C	-Pxx	-KBR	-Hxx	-Axx
6"	4.5"	S36S645	-C	-Pxx	-KBR	-Hxx	-Axx
6"	5"	S36S65	-C	-Pxx	-KBR	-Hxx	-Axx
6"	6"	S36S66	-C	-Pxx	-KBR	-Hxx	-Axx

S36S525-P18



### S37S Storz x Rigid Female

Storz	Female Rigid NH Thread	Part Number	Chrome	Powder Coat	KBrite	Hardcoat	Anodized
2.5"	2.5"	S37S2525	-C	-Pxx	-KBR	-Hxx	-Axx
2.5"	3"	S37S253	-C	-Pxx	-KBR	-Hxx	-Axx
3"	2.5"	S37S325	-C	-Pxx	-KBR	-Hxx	-Axx
3"	3"	S37S33	-C	-Pxx	-KBR	-Hxx	-Axx
4"	2.5"	S37S425	-C	-Pxx	-KBR	-Hxx	-Axx
4"	3"	S37S43	-C	-Pxx	-KBR	-Hxx	-Axx
4"	3.5"	S37S435	-C	-Pxx	-KBR	-Hxx	-Axx
4"	4"	S37S44	-C	-Pxx	-KBR	-Hxx	-Axx
4"	4.5"	S37S445	-C	-Pxx	-KBR	-Hxx	-Axx
4"	5"	S37S45	-C	-Pxx	-KBR	-Hxx	-Axx
4"	6"	S37S46	-C	-Pxx	-KBR	-Hxx	-Axx
5"	2.5"	S37S525	-C	-Pxx	-KBR	-Hxx	-Axx
5"	3"	S37S53	-C	-Pxx	-KBR	-Hxx	-Axx
5"	3.5"	S37S535	-C	-Pxx	-KBR	-Hxx	-Axx
5"	4"	S37S54	-C	-Pxx	-KBR	-Hxx	-Axx
5"	4.5"	S37S545	-C	-Pxx	-KBR	-Hxx	-Axx
5"	5"	S37S55	-C	-Pxx	-KBR	-Hxx	-Axx
5"	6"	S37S56	-C	-Pxx	-KBR	-Hxx	-Axx
6"	4"	S37S64	-C	-Pxx	-KBR	-Hxx	-Axx
6"	4.5"	S37S645	-C	-Pxx	-KBR	-Hxx	-Axx
6"	5"	S37S65	-C	-Pxx	-KBR	-Hxx	-Axx
6"	6"	S37S66	-C	-Pxx	-KBR	-Hxx	-Axx

S37S525-P18



S37S56NS-P09



SIZE		Part Number	Finishes				
Storz	Female LH Swivel NH Thread		<i>See page 3 for color chart and proper ordering information.</i>				
<b>S54L Storz x Swivel Long Handle Female</b>							
2.5"	2.5"	S54L2525	<p> <b>Chrome</b>    <b>Powder Coat</b>    <b>KBrite</b>    <b>Hardcoat</b>    <b>Anodized</b>            (-C)    (-Pxx)    (-KBR)    (-Hxx)    (-Axx)         </p>				
3"	2.5"	S54L325					
3"	3"	S54L33					
4"	2.5"	S54L425					
4"	3"	S54L43					
4"	3.5"	S54L435					
4"	4"	S54L44					
4"	4.5"	S54L445					
4"	5"	S54L45					
4"	6"	S54L46					
5"	2.5"	S54L525					
5"	3"	S54L53					
5"	3.5"	S54L535					
5"	4"	S54L54					
5"	4.5"	S54L545					
5"	5"	S54L55					
5"	6"	S54L56					
6"	4"	S54L64					
6"	4.5"	S54L645					
6"	5"	S54L65					
6"	6"	S54L66					
<b>S54L-T Storz Full Time Swivel x Swivel Long Handle Female</b>							
Storz FT Swivel	Female LH Swivel NH Thread	Part Number					
4"	2.5"	S54L4T25	<p> <b>Chrome</b>    <b>Powder Coat</b>    <b>KBrite</b>    <b>Hardcoat</b>    <b>Anodized</b>            (-C)    (-Pxx)    (-KBR)    (-Hxx)    (-Axx)         </p>				
4"	3"	S54L4T3					
4"	4"	S54L4T4					
4"	4.5"	S54L4T45					
4"	5"	S54L4T5					
4"	6"	S54L4T6					
5"	2.5"	S54L5T25					
5"	3"	S54L5T3					
5"	4"	S54L5T4					
5"	4.5"	S54L5T45					
5"	5"	S54L5T5					
5"	6"	S54L5T6					

S54L44-P18



S54L4T4-P18



SIZE		Part Number	Finishes				
Storz	Female RL Swivel NH Thread		<i>See page 3 for color chart and proper ordering information.</i>				
<b>S54R Storz x Swivel Rocker Lug Female</b>							
2.5"	2.5"	S54R2525	<p> <b>Chrome</b>    <b>Powder Coat</b>    <b>KBrite</b>    <b>Hardcoat</b>    <b>Anodized</b>            (-C)    (-Pxx)    (-KBR)    (-Hxx)    (-Axx)         </p>				
3"	2.5"	S54R325					
3"	3"	S54R33					
4"	2.5"	S54R425					
4"	3"	S54R43					
4"	3.5"	S54R435					
4"	4"	S54R44					
4"	4.5"	S54R445					
4"	5"	S54R45					
4"	6"	S54R46					
5"	2.5"	S54R525					
5"	3"	S54R53					
5"	3.5"	S54R535					
5"	4"	S54R54					
5"	4.5"	S54R545					
5"	5"	S54R55					
5"	6"	S54R56					
6"	4"	S54R64					
6"	4.5"	S54R645					
6"	5"	S54R65					
6"	6"	S54R66					
<b>S54R-T Storz Full Time Swivel x Swivel Rocker Lug Female</b>							
FT Swivel Storz	Female RL Swivel NH Thread	Part Number					
4"	2.5"	S54R4T25	<p> <b>Chrome</b>    <b>Powder Coat</b>    <b>KBrite</b>    <b>Hardcoat</b>    <b>Anodized</b>            (-C)    (-Pxx)    (-KBR)    (-Hxx)    (-Axx)         </p>				
4"	3"	S54R4T3					
4"	4"	S54R4T4					
4"	4.5"	S54R4T45					
4"	5"	S54R4T5					
4"	6"	S54R4T6					
5"	2.5"	S54R5T25					
5"	3"	S54R5T3					
5"	4"	S54R5T4					
5"	4.5"	S54R5T45					
5"	5"	S54R5T5					
5"	6"	S54R5T6					
<b>S60S Storz x Storz</b>							
Storz	Storz	Part Number					
3"	2.5"	S60S325		<p> <b>Chrome</b>    <b>Powder Coat</b>    <b>KBrite</b>    <b>Hardcoat</b>    <b>Anodized</b>            (-C)    (-Pxx)    (-KBR)    (-Hxx)    (-Axx)         </p>			
4"	2.5"	S60S425					
4"	3"	S60S43					
5"	2.5"	S60S525					
5"	3"	S60S53					
5"	4"	S60S54					
6"	4"	S60S64					
6"	5"	S60S65					

S54R525-H52



S60S54-P18



For most configurations, finish is applied to the threaded adapter only, camlock is unplated

### K34R Camlock Female x Rigid Female

Camlock Female	NH Rigid Female	Part Number
2"	2.5"	K34R225
2"	3"	K34R23
2"	4"	K34R24
2"	4.5"	K34R245
2.5"	2.5"	K34R2525
2.5"	3"	K34R253
2.5"	4"	K34R254
2.5"	4.5"	K34R2545-P09
2.5"	5"	K34R255
2.5"	6"	K34R256
3"	2.5"	K34R325
3"	3"	K34R33
3"	4"	K34R34
3"	4.5"	K34R345
4"	2.5"	K34R425
4"	3"	K34R43
4"	4"	K34R44
4"	4.5"	K34R445
4"	5"	K34R45
4"	6"	K34R46
5"	2.5"	K34R525
5"	3"	K34R53
5"	4"	K34R54
5"	4.5"	K34R545
5"	5"	K34R55
5"	6"	K34R56
6"	2.5"	K34R625
6"	3"	K34R63
6"	4"	K34R64
6"	4.5"	K34R645
6"	5"	K34R65
6"	6"	K34R66



#### Finishes

Chrome



Powder Coat



KBrite



Hardcoat



Anodized



### K37R Camlock Male x Rigid Female

Camlock Male	NH Rigid Female	Part Number
2"	2.5"	K37R225
2"	3"	K37R23
2"	4"	K37R24
2"	4.5"	K37R245
2.5"	2.5"	K37R2525
2.5"	3"	K37R253
2.5"	4"	K37R254
2.5"	4.5"	K37R2545
2.5"	5"	K37R255
2.5"	6"	K37R256
3"	2.5"	K37R325
3"	3"	K37R33
3"	4"	K37R34
3"	4.5"	K37R345
4"	2.5"	K37R42
4"	3"	K37R4
4"	4"	K37R44
4"	4.5"	K37R445
4"	5"	K37R4
4"	6"	K37R4
5"	2.5"	K37R52
5"	3"	K37R5
5"	4"	K37R5
5"	4.5"	K37R545
5"	5"	K37R5
5"	6"	K37R56
6"	2.5"	K37R625
6"	3"	K37R63
6"	4"	K37R64
6"	4.5"	K37R645
6"	5"	K37R65
6"	6"	K37R66



#### Finishes

Chrome



Powder Coat



KBrite



Hardcoat



Anodized



For ALA through ALF the camlock is unplated

### ALA Camlock Male x Female NPT

Camlock Male	Female NPT	Part Number
1.5"	1.5"	ALA15
2"	2"	ALA20
2.5"	2.5"	ALA25
3"	3"	ALA30
4"	4"	ALA40
5"	5"	ALA50
6"	6"	ALA60



### ALB Camlock Female x Male NPT

Camlock Female	Male NPT	Part Number
1.5"	1.5"	ALB15
2"	2"	ALB20
2.5"	2.5"	ALB25
3"	3"	ALB30
4"	4"	ALB40
5"	5"	ALB50
6"	6"	ALB60



### ALC Camlock Female x Hose Shank

Camlock Female	Hose Shank	Part Number
1.5"	1.5"	ALC15
2"	2"	ALC20
2.5"	2.5"	ALC25
3"	3"	ALC30
4"	4"	ALC40
5"	5"	ALC50
6"	6"	ALC60



### ALD Camlock Female x Female NPT

Camlock Female	Female NPT	Part Number
1.5"	1.5"	ALD15
2"	2"	ALD20
2.5"	2.5"	ALD25
3"	3"	ALD30
4"	4"	ALD40
5"	5"	ALD50
6"	6"	ALD60



### ALE Camlock Male x Hose Shank

Camlock Male	Hose Shank	Part Number
1.5"	1.5"	ALE15
2"	2"	ALE20
2.5"	2.5"	ALE25
3"	3"	ALE30
4"	4"	ALE40
5"	5"	ALE50
6"	6"	ALE60



### ALF Camlock Male x Male NPT

Camlock Male	Male NPT	Part Number
1.5"	1.5"	ALF15
2"	2"	ALF20
2.5"	2.5"	ALF25
3"	3"	ALF30
4"	4"	ALF40
5"	5"	ALF50
6"	6"	ALF60



### K36R Camlock Male x Rigid Male

Camlock Male	NH Rigid Male	Part Number
2"	2.5"	K36R225
2"	3"	K36R23
2"	4"	K36R24
2"	4.5"	K36R245
2.5"	2.5"	K36R2525
2.5"	3"	K36R253
2.5"	4"	K36R254
2.5"	4.5"	K36R2545
2.5"	5"	K36R255
2.5"	6"	K36R256
3"	2.5"	K36R325
3"	3"	K36R33
3"	4"	K36R34
3"	4.5"	K36R345
4"	2.5"	K36R425
4"	3"	K36R43
4"	4"	K36R44
4"	4.5"	K36R445
4"	5"	K36R45
4"	6"	K36R46
5"	2.5"	K36R525
5"	3"	K36R53
5"	4"	K36R54
5"	4.5"	K36R545
5"	5"	K36R55
5"	6"	K36R56
6"	2.5"	K36R625
6"	3"	K36R63
6"	4"	K36R64
6"	4.5"	K36R645
6"	5"	K36R65
6"	6"	K36R66



#### Finishes

Chrome



Powder Coat



KBrite



Hardcoat



Anodized



### K73R Camlock Female x Rigid Male

Camlock Female	NH Rigid Male	Part Number
2"	2.5"	K73R225
2"	3"	K73R23
2"	4"	K73R24
2"	4.5"	K73R245
2.5"	2.5"	K73R2525
2.5"	3"	K73R253
2.5"	4"	K73R254
2.5"	4.5"	K73R2545
2.5"	5"	K73R255
2.5"	6"	K73R256
3"	2.5"	K73R325
3"	3"	K73R33
3"	4"	K73R34
3"	4.5"	K73R345
4"	2.5"	K73R425
4"	3"	K73R43
4"	4"	K73R44
4"	4.5"	K73R445
4"	5"	K73R45
4"	6"	K73R46
5"	2.5"	K73R525
5"	3"	K73R53
5"	4"	K73R54
5"	4.5"	K73R545
5"	5"	K73R55
5"	6"	K73R56
6"	2.5"	K73R62
6"	3"	K73R63
6"	4"	K73R64
6"	4.5"	K73R645
6"	5"	K73R65
6"	6"	K73R66



#### Finishes

Chrome



Powder Coat



KBrite



Hardcoat



Anodized



SIZE			Finishes				
			For most configurations, finish is applied to the threaded adapter only, female instantaneous is unplated <i>See page 3 for color chart and proper ordering information.</i>				
<b>B34R British Instantaneous Female x Female</b>							
BI Female	Female Thread	Part Number	Chrome	Powder Coat	KBrite	Hardcoat	Anodized
1.5"	1.5"	B34R1515	(-C)      (-Pxx)      (-KBR)      (-Hxx)      (-Axx)				
1.5"	2"	B34R152					
1.5"	2.5"	B34R1525					
1.5"	3"	B34R153					
2.5"	1.5"	B34R2515					
2.5"	2"	B34R252					
2.5"	2.5"	B34R2525					
<b>B37S British Instantaneous Female x Male</b>							
BI Female	Male Thread	Part Number	Chrome	Powder Coat	KBrite	Hardcoat	Anodized
1.5"	1.5"	B37S1515	(-C)      (-Pxx)      (-KBR)      (-Hxx)      (-Axx)				
1.5"	2"	B37S152					
1.5"	2.5"	B37S1525					
2.5"	1.5"	B37S2515					
2.5"	2.5"	B37S2525					
2.5"	2.5"	B37S2525					
<b>B36R British Instantaneous Male x Male</b>							
BI Male	Male Thread	Part Number	Chrome	Powder Coat	KBrite	Hardcoat	Anodized
1.5"	1.5"	B36R1515			(-KBR)      (-Hxx)      (-Axx)		
1.5"	2"	B36R152					
1.5"	2.5"	B36R1525					
2.5"	1"	B36R251					
2.5"	1.5"	B36R2515					
2.5"	2"	B36R252					
2.5"	2.5"	B36R2525					
2.5"	2.5"	B36R2525					
<b>B38R British Instantaneous Male x Female</b>							
BI Male	Female Thread	Part Number	Chrome	Powder Coat	KBrite	Hardcoat	Anodized
1.5"	2"	B38R152	(-KBR)      (-Hxx)      (-Axx)				
1.5"	2.5"	B38R1525					
2.5"	1.5"	B38R2515					
2.5"	2"	B38R252					
2.5"	2.5"	B38R2525					
2.5"	2.5"	B38R2525					
2.5"	3"	B38R253					



## 2-in-1 ADAPTERS

SIZE			Part Number	Finishes				
NH Male	Storz	NH Female		See page 3 for color chart and proper ordering information.				
<b>Adapter Only NH Rigid Female x Storz x 2.5" NH Male</b>								
2.5"	4"	2.5"	201-41	(-C)      (-Pxx)      (-KBR)      (-Hxx)      (-Axx)				
2.5"	4"	3"	201-42					
2.5"	5"	2.5"	201-51					
2.5"	5"	3"	201-52					
2.5"	5"	3"	201-52					
<b>Adapter With 30° Elbow NH Swivel Female x Storz x 2.5" NH Male</b>								
2.5"	4"	2.5"	201-041	(-C)      (-Pxx)      (-KBR)				
2.5"	4"	3"	201-042					
2.5"	5"	2.5"	201-051					
2.5"	5"	3"	201-052					
2.5"	5"	3"	201-052					
<b>201 Deep Storz Cap w/Chain</b>								
-	4"	-	CC4074	(-C)      (-Pxx)      (-KBR)      (-Hxx)      (-Axx)				
-	5"	-	CC5073					

201-52-P07



201-052-P07



CC4074-P07



SIZE	Part Number	Finishes				
		<i>See page 3 for color chart and proper ordering information.</i>				
<b>British Instantaneous Cap w/ Chain</b>						
1.5"	CC15BI					KBrite
2.5"	CC25BI					(KBR)
<b>British Instantaneous Cap w/o Chain</b>						
1.5"	CP15BI					KBrite
2.5"	CP25BI					(KBR)
<b>Camlock Cap w/ Chain</b>						
2"	CC204					
2.5"	CC254					
3"	CC304					KBrite
4"	CC404					(KBR)
5"	CC504					Unplated
6"	CC604					(UNP)
<b>Gauge Cap NH Rocker Lug Female (Liquid Filled Gauge 0 - 300psi range) w/Petcock</b>						
2"	GC2052-1	Chrome	Powder Coat	KBrite	Hardcoat	Anodized
2.5"	GC2552-1	(-C)	(-Pxx)	(-KBR)	(-Hxx)	(-Axx)
3"	GC3052-1					
<b>Long Handle NH 2pc Swivel Long Handle Cap w/o Chain</b>						
2.5"	CP2551					
3"	CP3051					
3.5"	CP3551					Chrome
4"	CP4051					(-C)
4.5"	CP4551					Powder Coat
5"	CP5051					(-Pxx)
6"	CP6051					KBrite
						(-KBR)
						Hardcoat
						(-Hxx)
						Anodized
						(-Axx)
<b>Long Handle NH 2pc Swivel Long Handle Cap w/o Chain w/ Petcock Valve</b>						
2.5"	CP2551P					
3"	CP3051P					
3.5"	CP3551P					Chrome
4"	CP4051P					(-C)
4.5"	CP4551P					Powder Coat
5"	CP5051P					(-Pxx)
6"	CP6051P					KBrite
						(-KBR)
						Hardcoat
						(-Hxx)
						Anodized
						(-Axx)
<b>NH 2pc Swivel Long Handle Cap w/ Chain</b>						
2.5"	CC2551					
3"	CC3051					
3.5"	CC3551					Chrome
4"	CC4051					(-C)
4.5"	CC4551					Powder Coat
5"	CC5051					(-Pxx)
6"	CC6051					KBrite
						(-KBR)
						Hardcoat
						(-Hxx)
						Anodized
						(-Axx)
<b>NH 2pc Swivel Long Handle Cap w/ Chain w/ Petcock Valve</b>						
2.5"	CC2551P					
3"	CC3051P					
3.5"	CC3551P					Chrome
4"	CC4051P					(-C)
4.5"	CC4551P					Powder Coat
5"	CC5051P					(-Pxx)
6"	CC6051P					KBrite
						(-KBR)
						Hardcoat
						(-Hxx)
						Anodized
						(-Axx)

CC25BI-KBR



CC304-KBR



GC2552-1-H52



CP6051-H52



Caps also available with cables. Call customer service for information and part numbers.

SIZE	Part Number	Finishes				
		<i>See page 3 for color chart and proper ordering information.</i>				
<b>NH Rocker Lug Cap w/o Chain</b>						
1"	CP1052					
1.5"	CP1552					
2"	CP2052					
2.5"	CP2552					
3"	CP3052					
3.5"	CP3552					
4"	CP4052					
4.5"	CP4552					
5"	CP5052					
6"	CP6052					
<b>NH Rocker Lug Cap w/ Chain</b>						
1"	CC1052					
1.5"	CC1552					
2"	CC2052					
2.5"	CC2552					
3"	CC3052					
3.5"	CC3552					
4"	CC4052					
4.5"	CC4552					
5"	CC5052					
6"	CC6052					
<b>NH Rocker Lug Cap w/o Chain w/ Petcock Valve</b>						
1"	CP1052P					
1.5"	CP1552P					
2"	CP2052P					
2.5"	CP2552P					
3"	CP3052P					
3.5"	CP3552P					
4"	CP4052P					
4.5"	CP4552P					
5"	CP5052P					
6"	CP6052P					
<b>NH Rocker Lug Cap w/ Chain w/ Petcock Valve</b>						
1"	CC1052P					
1.5"	CC1552P					
2"	CC2052P					
2.5"	CC2552P					
3"	CC3052P					
3.5"	CC3552P					
4"	CC4052P					
4.5"	CC4552P					
5"	CC5052P					
4.5"	CC6052P					

CP2552-H52



CP2552P-H52



CC2552P-H52



Caps also available with cables. Call customer service for information and part numbers.

SIZE	Part Number	Finishes				
		<i>See page 3 for color chart and proper ordering information.</i>				
<b>Storz Cap w/ Chain</b>						
2.5"	CC257	Chrome (-C)	Powder Coat (-Pxx)	KBrite (-KBR)	Hardcoat (-Hxx)	Anodized (-Axx)
3"	CC307					
4"	CC407					
5"	CC507					
6"	CC607					
<b>Storz Cap w/ Chain w/ Petcock Valve</b>						
2.5"	CC257P	Chrome (-C)	Powder Coat (-Pxx)	KBrite (-KBR)	Hardcoat (-Hxx)	Anodized (-Axx)
3"	CC307P					
4"	CC407P					
5"	CC507P					
6"	CC607P					
<b>Storz Cap w/ Chain w/ Lock</b>						
2.5"	CC257L	Chrome (-C)	Powder Coat (-Pxx)	KBrite (-KBR)	Hardcoat (-Hxx)	Anodized (-Axx)
3"	CC307L					
4"	CC407L					
5"	CC507L					
6"	CC607L					
<b>Hydrant Storz Cap w/ Cable</b>						
4"	CC407-008	Chrome (-C)	Powder Coat (-Pxx)	KBrite (-KBR)	Hardcoat (-Hxx)	Anodized (-Axx)
5"	CC507-008					
<b>Storz Cap w/o Chain</b>						
2.5"	CP257	Chrome (-C)	Powder Coat (-Pxx)	KBrite (-KBR)	Hardcoat (-Hxx)	Anodized (-Axx)
3"	CP307					
4"	CP407					
5"	CP507					
6"	CP607					
<b>Storz Cap w/o Chain w/ Petcock Valve</b>						
2.5"	CP257P	Chrome (-C)	Powder Coat (-Pxx)	KBrite (-KBR)	Hardcoat (-Hxx)	Anodized (-Axx)
3"	CP307P					
4"	CP407P					
5"	CP507P					
6"	CP607P					
<b>Storz Cap w/o Chain w/ Lock</b>						
2.5"	CP257L	Chrome (-C)	Powder Coat (-Pxx)	KBrite (-KBR)	Hardcoat (-Hxx)	Anodized (-Axx)
3"	CP307L					
4"	CP407L					
5"	CP507L					
6"	CP607L					

CC257-C



CC507-P07



CC407-008-H62







Caps also available with cables. Call customer service for information and part numbers.

<b>Fire Pump Steamer Caps NH Long Handle w/o chain</b>								
SIZE	Part Number	(Outer) / (Center)		Chrome	Powder Coat	KBrite	Hardcoat	Anodized
		Chrome	Anodized					
4"	SCP4051	Chrome (-C)	Anodized (-A52)	Chrome (-C)	Powder Coat (-Pxx)	KBrite (-KBR)	Hardcoat (-Hxx)	Anodized (-Axx)
4.5"	SCP4551							
5"	SCP5051							
6"	SCP6051							







Standard finish is in the image: Chrome outer with Black Anodized center.  
 Also available in Chrome outer with Chrome center and other finishes, upon request.  
 Customizable with your company logo. Kochek logo in the image as a reference only.  
 Low-Profile flat-topped caps, with no provision for chain attachment.

SIZE	Part Number	Finishes
		<i>See page 3 for color chart and proper ordering information.</i>
<b>British Instantaneous Plug w/ Chain</b>		
1.5"	PC15BI	KBrite 
2.5"	PC25BI	
<b>British Instantaneous Plug w/o Chain</b>		
1.5"	PL15BI	KBrite 
2.5"	PL25BI	
<b>Camlock Plug w/ Chain</b>		
2"	PC204	KBrite      Unplated  
2.5"	PC254	
3"	PC304	
4"	PC404	
5"	PC504	
6"	PC604	



Plugs also available with cables. Call customer service for information and part numbers.

SIZE	Part Number	Finishes				
		<i>See page 3 for color chart and proper ordering information.</i>				
<b>NH Rocker Lug Plug w/o Chain</b>						
1"	PL1052	<div style="display: flex; justify-content: space-around;"> <div>Chrome (-C)</div> <div>Powder Coat (-Pxx)</div> <div>KBrite (-KBR)</div> <div>Hardcoat (-Hxx)</div> <div>Anodized (-Axx)</div> </div>				
1.5"	PL1552					
2"	PL2052					
2.5"	PL2552					
3"	PL3052					
3.5"	PL3552					
4"	PL4052					
4.5"	PL4552					
5"	PL5052					
6"	PL6052					
<b>NH Rocker Lug Plug w/ Chain</b>						
1"	PC1052	<div style="display: flex; justify-content: space-around;"> <div>Chrome (-C)</div> <div>Powder Coat (-Pxx)</div> <div>KBrite (-KBR)</div> <div>Hardcoat (-Hxx)</div> <div>Anodized (-Axx)</div> </div>				
1.5"	PC1552					
2"	PC2052					
2.5"	PC2552					
3"	PC3052					
3.5"	PC3552					
4"	PC4052					
4.5"	PC4552					
5"	PC5052					
6"	PC6052					
<b>NH Rocker Lug Plug w/o Chain w/ Petcock Valve</b>						
1"	PL1052P	<div style="display: flex; justify-content: space-around;"> <div>Chrome (-C)</div> <div>Powder Coat (-Pxx)</div> <div>KBrite (-KBR)</div> <div>Hardcoat (-Hxx)</div> <div>Anodized (-Axx)</div> </div>				
1.5"	PL1552P					
2"	PL2052P					
2.5"	PL2552P					
3"	PL3052P					
3.5"	PL3552P					
4"	PL4052P					
4.5"	PL4552P					
5"	PL5052P					
6"	PL6052P					
<b>NH Rocker Lug Plug w/ Chain w/ Petcock Valve</b>						
1"	PC1052P	<div style="display: flex; justify-content: space-around;"> <div>Chrome (-C)</div> <div>Powder Coat (-Pxx)</div> <div>KBrite (-KBR)</div> <div>Hardcoat (-Hxx)</div> <div>Anodized (-Axx)</div> </div>				
1.5"	PC1552P					
2"	PC2052P					
2.5"	PC2552P					
3"	PC3052P					
3.5"	PC3552P					
4"	PC4052P					
4.5"	PC4552P					
5"	PC5052P					
6"	PC6052P					

PL2552-H52

PC2552-H52

PC2552-C

Plugs also available with cables. Call customer service for information and part numbers.

SIZE	Part Number	Finishes	
		<i>See page 3 for color chart and proper ordering information.</i>	
<b>6" PVC to Female Dry Hydrant Adapter w/ Plug Straight</b>			
4.5"	DHF451	Powder Coat	Nat/Grey
5"	DHF51	(-P07)	(-H51)
6"	DHF61		
<b>Dry Hydrant Kit: NH Swivel Long Handle Female x 6" NPSH Female w/ Plug &amp; Chain</b>			
4.5"	X2A-008	Powder Coat	Nat/Grey
5"	X2A-021	(-P07)	(-H51)
6"	X2A-004		
<b>NH Male Dry Hydrant Adapter x 6" PVC w/ Aluminum Cap Straight</b>			
4.5"	DHM451	Powder Coat	Nat/Grey
5"	DHM51	(-P07)	(-H51)
6"	DHM61		
<b>NH Male Dry Hydrant Adapter x 6" PVC w/ Polymer Cap Straight</b>			
4.5"	DHM452	Powder Coat	Nat/Grey
5"	-	(-P07)	(-H51)
6"	DHM62		
<b>Dry Hydrant Kit: NH Male x 6" NPSH Female w/ Cap &amp; Chain</b>			
4.5"	X2A-006	Powder Coat	Nat/Grey
5"	X2A-022	(-P07)	(-H51)
6"	X2A-005		
<b>Storz Dry Hydrant Adapter x 6" PVC w/ Aluminum Cap Straight</b>			
4"	DHS41	Powder Coat	Nat/Grey
5"	DHS51	(-P07)	(-H51)
6"	DHS61		
<b>NH Female Dry Hydrant Adapter x 6" PVC w/ Aluminum Cap - 90° Elbow</b>			
4"	DHF4511	Powder Coat	Nat/Grey
5"	DHF511	(-P07)	(-H51)
6"	DHF611		
<b>NH Female Dry Hydrant Adapter x 6" PVC w/ Aluminum Cap - 45° Elbow</b>			
4"	DHF4512	Powder Coat	Nat/Grey
5"	DHF512	(-P07)	(-H51)
6"	DHF612		

DHF61-P07



DHM61-P07



DHF511-P07



90° degree elbow

PVC pipe is offered in white color, schedule 40, 6" size, all finishes applied to adaptors only.

SIZE	Part Number	Finishes	
		<i>See page 3 for color chart and proper ordering information.</i>	
<b>6" PVC to Male Dry Hydrant Adapter w/ Aluminum Cap &amp; 90° Elbow</b>			
4.5"	DHM4511	Powder Coat (-P07)	Nat/Grey (-H51)
5"	DHM511		
6"	DHM611		
<b>6" PVC to Male Dry Hydrant Adapter w/ Aluminum Cap &amp; 45° Elbow</b>			
4.5"	DHM4512	Powder Coat (-P07)	Nat/Grey (-H51)
5"	DHM512		
6"	DHM612		
<b>6" PVC to Male Dry Hydrant Adapter w/ Polymer Cap &amp; 90° Elbow</b>			
4.5"	DHM4521	Powder Coat (-P07)	Nat/Grey (-H51)
5"	-		
6"	DHM621		
<b>6" PVC to Male Dry Hydrant Adapter w/ Polymer Cap &amp; 45° Elbow</b>			
4.5"	DHM4522	Powder Coat (-P07)	Nat/Grey (-H51)
5"	-		
6"	DHM622		
<b>6" PVC Storz Dry Hydrant Adapter w/ Aluminum Cap &amp; 90° Elbow</b>			
4.5"	DHS411	Powder Coat (-P07)	Nat/Grey (-H51)
5"	DHS511		
6"	DHS611		
<b>6" PVC Storz Dry Hydrant Adapter w/ Aluminum Cap &amp; 45° Elbow</b>			
4"	DHS412	Powder Coat (-P07)	Nat/Grey (-H51)
5"	DHS512		
6"	DHS612		



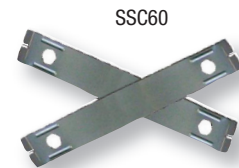
PVC pipe is offered in white color, schedule 40, 6" size, all finishes applied to adaptors only.

## Dry Hydrant Strainers and Accessories

REFLECTIVE DRY HYDRANT SIGN	
SIZE	Part Number
12" X 18"	SDH



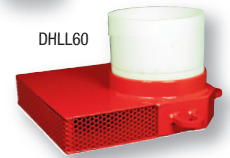
STRAINER SUPPORT CLAMP (Stainless Steel)	
SIZE	Part Number
6"	SSC60
8"	SSC80
10"	SSC10



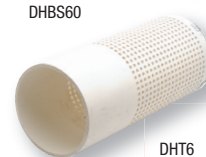
SIZE	Part Number	Finishes	
		<i>See page 3 for color chart and proper ordering information.</i>	
<b>Shallow Water Strainer (Tear Drop Style)</b>			
6"	TDS6	Powder Coat (-P07)	
<b>Dry Hydrant Low level PVC Strainer</b>			
6"	DHL60	Powder Coat (-P07)	
<b>PVC Barrel Strainer w/ Fixed End</b>			
5"	DHBS60	Powder Coat (-P18)	
8"	DHBS80		
<b>Full Time In Line Swivel</b>			
6"	DHT6-001	Powder Coat (-P07)	Nat/Grey (-H51)
<b>Dry Hydrant NH Aluminum Cap &amp; Chain</b>			
4.5"	DHC452	Powder Coat (-P07)	Nat/Grey (-H51)
5"	DHC502		
6"	DHC602		
<b>Dry Hydrant Polymer Cap &amp; Chain</b>			
4.5"	DHPC45	No Finish	
-	-		
6"	DHPC60		
<b>Dry Hydrant NH Aluminum Plug &amp; Chain</b>			
4.5"	DHP45	Powder Coat (-P07)	Nat/Grey (-H51)
5"	DHP50		
6"	DHP60		
<b>Horizontal PVC Strainer w/ Fixed Cover</b>			
6"	HS61	Powder Coat (-P18)	
6"	HS81		
-	-		
<b>Horizontal PVC Strainer w/ Back Flushing Cover Cover</b>			
6"	HS62	Powder Coat (-P18)	
8"	HS82		
10"	HS102		
<b>Horizontal PVC Strainer w/ Fixed Cover &amp; Check Valve</b>			
6"	HS611	Powder Coat (-P18)	
8"	HS811		



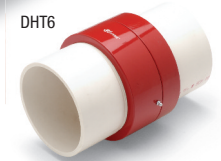
TDS6



DHL60



DHBS60



DHT6



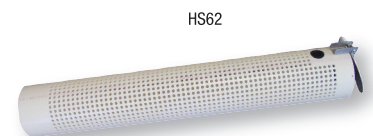
DHC Aluminum Cap



DHP Polymer Cap



DHP Aluminum Plug



HS62

SIZE			Finishes				
			<i>See page 3 for color chart and proper ordering information.</i>				
<b>30° Elbow w/ NH Swivel Rocker Lug Female x NH Male</b>							
Female	Male	Part Number	Chrome	Powder Coat	KBrite		
2.5"	2.5"	KE25R25	(-C)	(-Pxx)	(-KBR)		
3"	3"	KE3R3					
3.5"	3.5"	KE35R35					
4"	4"	KE4R4					
4.5"	4.5"	KE45R45					
5"	5"	KE5R5					
6"	6"	KE6R6					
<b>30° Elbow w/ NH Swivel Long Handle Female x NH Male</b>							
Female	Male	Part Number	Chrome	Powder Coat	KBrite		
2.5"	2.5"	KE25L25	(-C)	(-Pxx)	(-KBR)		
3"	3"	KE3L3					
3.5"	3.5"	KE35L35					
4"	4"	KE4L4					
4.5"	4.5"	KE45L45					
5"	5"	KE5L5					
6"	6"	KE6L6					
<b>45° High Pressure Elbow w/ NH Swivel Rocker Lug Female x NH Male</b>							
Female	Male	Part Number	Chrome	Powder Coat	KBrite	Hardcoat	Anodized
2.5"	2.5"	HPKE25R25-45	(-C)	(-Pxx)	(-KBR)	(-Hxx)	(-Axx)
3"	3"	HPKE3R3-45					
3.5"	3.5"	HPKE35R35-45					
4"	4"	HPKE4R4-45					
4.5"	4.5"	HPKE45R45-45					
5"	5"	HPKE5R5-45					
6"	6"	HPKE6R6-45					
<b>45° High Pressure Elbow w/ NH Swivel Long Handle Female x NH Male</b>							
Female	Male	Part Number	Chrome	Powder Coat	KBrite	Hardcoat	Anodized
2.5"	2.5"	HPKE25L25-45	(-C)	(-Pxx)	(-KBR)	(-Hxx)	(-Axx)
3"	3"	HPKE3L3-45					
3.5"	3.5"	HPKE35L35-45					
4"	4"	HPKE4L4-45					
4.5"	4.5"	HPKE45L45-45					
5"	5"	HPKE5L5-45					
6"	6"	HPKE6L6-45					
<b>90° High Pressure Elbow w/ NH Swivel Rocker Lug Female x NH Male</b>							
Female	Male	Part Number	Chrome	Powder Coat	KBrite		
2.5"	2.5"	HPKE25R25-90	(-C)	(-Pxx)	(-KBR)		

KE6L6-P18-P09



HPKE3R3-45-P18-P09-P18



HPKE5L5-45-P18-P09-P18



HPKE25R25-90-P18-P09-P18



SIZE	Finishes
	<i>See page 3 for color chart and proper ordering information.</i>

**30° Elbow w/ Storz x NH Swivel Rocker Lug Female**

Storz	NH Swivel Rocker Lug Female	Part Number
2.5"	2.5"	SKE2525R
2.5"	3"	SKE253R
3"	2.5"	SKE325R
3"	3"	SKE33R
4"	2.5"	SKE425R
4"	3"	SKE43R
4"	3.5"	SKE435R
4"	4"	SKE44R
4"	4.5"	SKE445R
4"	5"	SKE45R
4"	6"	SKE46R
5"	2.5"	SKE525R
5"	3"	SKE53R
5"	3.5"	SKE535R
5"	4"	SKE54R
5"	4.5"	SKE545R
5"	5"	SKE55R
5"	6"	SKE56R
6"	2.5"	SKE625R
6"	3"	SKE63R
6"	3.5"	SKE635R
6"	4"	SKE64R
6"	4.5"	SKE645R
6"	5"	SKE65R
6"	6"	SKE66R

Chrome    Powder Coat    KBrite  
 (-C)      (-Pxx)      (-KBR)

SKE44R-P18-P09



**30° Elbow w/ Storz Full Time Swivel x NH Swivel Rocker Lug Female**

Storz Full Time Swivel	NH Swivel Rocker Lug Female	Part Number
4"	2.5"	SKE4T25R
4"	3"	SKE4T3R
4"	3.5"	SKE4T35R
4"	4"	SKE4T4R
4"	4.5"	SKE4T45R
4"	5"	SKE4T5R
4"	6"	SKE4T6R
5"	2.5"	SKE5T25R
5"	3"	SKE5T3R
5"	3.5"	SKE5T35R
5"	4"	SKE5T4R
5"	4.5"	SKE5T45R
5"	5"	SKE5T5R
5"	6"	SKE5T6R

Chrome    Powder Coat    KBrite  
 (-C)      (-Pxx)      (-KBR)

SKE5T45R-P18-P09



SIZE	Finishes
	<i>See page 3 for color chart and proper ordering information.</i>

**30° Elbow w/ Storz x NH Swivel Long Handle Female**

Storz	NH Swivel LH Female	Part Number
2.5"	2.5"	SKE2525L
2.5"	3"	SKE253L
3"	2.5"	SKE325L
3"	3"	SKE33L
4"	2.5"	SKE425L
4"	3"	SKE43L
4"	3.5"	SKE435L
4"	4"	SKE44L
4"	4.5"	SKE445L
4"	5"	SKE45L
4"	6"	SKE46L
5"	2.5"	SKE525L
5"	3"	SKE53L
5"	3.5"	SKE535L
5"	4"	SKE54L
5"	4.5"	SKE545L
5"	5"	SKE55L
5"	6"	SKE56L
6"	2.5"	SKE625L
6"	3"	SKE63L
6"	3.5"	SKE635L
6"	4"	SKE64L
6"	4.5"	SKE645L
6"	5"	SKE65L
6"	6"	SKE66L

Chrome   Powder Coat   KBrite

-C   
  -Pxx   
  -KBR

SKE425L-P18



**30° Elbow w/ Storz Full Time Swivel x NH Swivel Long Handle Female**




Storz Full Time Swivel	NH Swivel LH Female	Part Number
4"	2.5"	SKE4T25L
4"	3"	SKE4T3L
4"	3.5"	SKE4T35L
4"	4"	SKE4T4L
4"	4.5"	SKE4T45L
4"	5"	SKE4T5L
4"	6"	SKE4T6L
5"	2.5"	SKE5T25L
5"	3"	SKE5T3L
5"	3.5"	SKE5T35L
5"	4"	SKE5T4L
5"	4.5"	SKE5T45L
5"	5"	SKE5T5L
5"	6"	SKE5T6L

Chrome   Powder Coat   KBrite

-C   
  -Pxx   
  -KBR

SKE5T6L-P18



SIZE			Finishes				
			See page 3 for color chart and proper ordering information.				
<b>Suction Elbow w/ NH Swivel Rocker Lug Female x NH Male</b>							
Female NH Swivel RL Female	NH Male	Part Number	Chrome (-C)    Powder Coat (-Pxx)    KBrite (-KBR)    Hardcoat (-Hxx)    Anodized (-Axx)		KEP25R25		
2.5"	2.5"	KEP25R25					
3"	3"	KEP3R3					
4"	4"	KEP4R4					
4.5"	4.5"	KEP45R45					
5"	5"	KEP5R5					
6"	6"	KEP6R6					
<b>Suction Elbow w/ NH Swivel Long Handle Female x NH Male</b>							
NH Swivel Long Handle Female	NH Male	Part Number	Chrome (-C)    Powder Coat (-Pxx)    KBrite (-KBR)    Hardcoat (-Hxx)    Anodized (-Axx)		KEP25L25		
2.5"	2.5"	KEP25L25					
3"	3"	KEP3L3					
4"	4"	KEP4L4					
4.5"	4.5"	KEP45L45					
5"	5"	KEP5L5					
6"	6"	KEP6L6					
<b>Suction Elbow w/ Storz x NH Swivel Rocker Lug Female</b>							
Storz	NH Swivel Rocker Lug Female	Part Number	Chrome (-C)    Powder Coat (-Pxx)    KBrite (-KBR)    Hardcoat (-Hxx)    Anodized (-Axx)		SKEP2525R		
2.5"	2.5"	SKEP2525R					
2.5"	3"	SKEP253R					
3"	2.5"	SKEP325R					
3"	3"	SKEP33R					
4"	2.5"	SKEP425R					
4"	3"	SKEP43R					
4"	3.5"	SKEP435R					
4"	4"	SKEP44R					
4"	4.5"	SKEP445R					
4"	5"	SKEP45R					
4"	6"	SKEP46R					
5"	2.5"	SKEP525R					
5"	3"	SKEP53R					
5"	3.5"	SKEP535R					
5"	4"	SKEP54R					
5"	4.5"	SKEP545R					
5"	5"	SKEP55R					
5"	6"	SKEP56R					
6"	2.5"	SKEP625R					
6"	3"	SKEP63R					
6"	3.5"	SKEP635R					
6"	4"	SKEP64R					
6"	4.5"	SKEP645R					
6"	5"	SKEP65R					
6"	6"	SKEP66R					

KEP25R25-B90-P18-P09

KEP6L6-C45-P18-P09

SKEP54PR-C90-P18-P09

Optional screen available, call for pricing and availability.

**Step 1:** Select # of sections to achieve the radius (Style A, B or C)

a. Elbows with more segments will have a more gradual bend/sweep.

b. Style A has 1 sec; Style B has 2 sec; Style C has 3 sec

**Step 2:** Select the radius: a. 90°, 60°, 45° or 30° (Style A must be 45° or less)

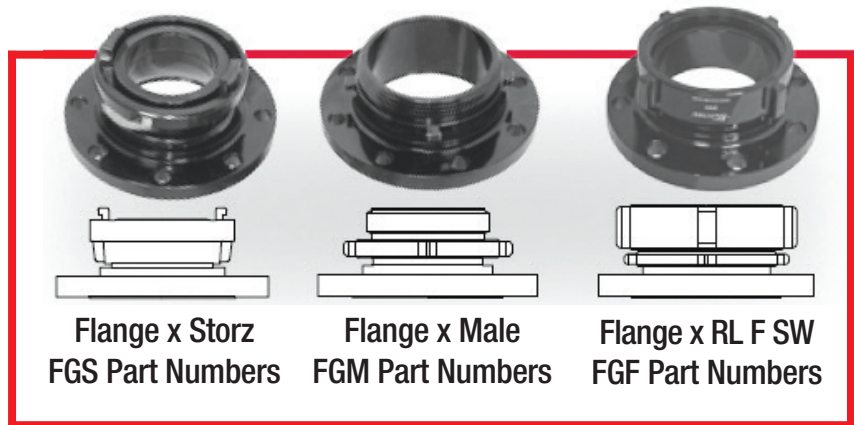
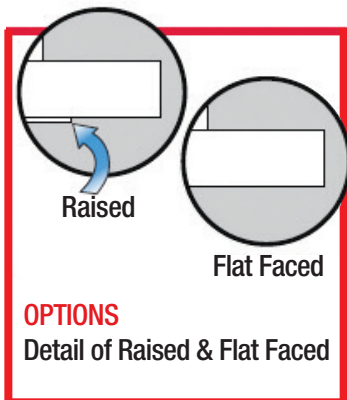
**Step 3:** See page 3 for how to select coating.

i.e., KEP25R25-B90-H52 is a Suction Elbow w/ 2.5" NHF Swivel Rocker Lug x 2.5" NHM, Non-Sweeping 90° Elbow w/ Black hardcoat adapters

Storz x ANSI Class150 (Carbon Steel) Flange			NH Male x ANSI Class150 (Carbon Steel) Flange			NH Swivel Rocker Lug Female x ANSI Class150 (Carbon Steel) Flange		
SIZE	Part Number	Finishes	SIZE	Part Number	Finishes	SIZE	Part Number	Finishes
2" x 2"	FGS22	Powder Coat (-Pxx)	1.5" x 2"	FGM152	Powder Coat (-Pxx)	2.5" x 2"	FGF25R2	Powder Coat (-Pxx)
2" x 2.5"	FGS225		1.5" x 2.5"	FGM1525		2.5" x 2.5"	FGF25R25	
2" x 3"	FGS23		1.5" x 3"	FGM153		2.5" x 3"	FGFS25R3	
2" x 4"	FGS24		2" x 2"	FGM22		2.5" x 4"	FGF25R4	
2.5" x 2"	FGS252		2" x 2.5"	FGM225		3" x 2.5"	FGF3R25	
2.5" x 2.5"	FGS2525		2" x 3"	FGM23		3" x 3"	FGF3R3	
2.5" x 3"	FGS253		2.5" x 2"	FGM252		3" x 4"	FGF3R4	
2.5" x 4"	FGS254		2.5" x 2.5"	FGM2525		4" x 3"	FGF4R3	
3" x 2"	FGS32		2.5" x 3"	FGM253		4" x 4"	FGF4R4	
3" x 2.5"	FGS32		2.5" x 4"	FGM254		4" x 5"	FGF4R5	
3" x 3"	FGS33		3" x 2.5"	FGM325		4" x 6"	FGF4R6	
3" x 4"	FGS34		3" x 3"	FGM33		4.5" x 3"	FGF45R3	
4" x 2.5"	FGS425		3" x 4"	FGM34		4.5" x 4"	FGF45R4	
4" x 3"	FGS43		4" x 3"	FGM43		4.5" x 5"	FGF45R5	
4" x 4"	FGS44		4" x 4"	FGM44		4.5" x 6"	FGF45R6	
4" x 5"	FGS45		4" x 5"	FGM45		5" x 4"	FGF5R4	
4" x 6"	FGS46		4" x 6"	FGM46		5" x 5"	FGF5R5	
5" x 3"	FGS53		4.5" x 4"	FGM454		5" x 6"	FGF5R6	
5" x 4"	FGS54		4.5" x 5"	FGM455		6" x 4"	FGF6R4	
5" x 5"	FGS55		4.5" x 6"	FGM456		6" x 5"	FGF6R5	
5" x 6"	FGS56		5" x 4"	FGM54		6" x 6"	FGF6R6	
6" x 4"	FGS64		5" x 5"	FGM55				
6" x 5"	FGS65		5" x 6"	FGM56				
6" x 6"	FGS66		6" x 4"	FGM64				
			6" x 5"	FGS65				
			6" x 6"	FGS66				

## Flat Faced Option

## Flange Comparison

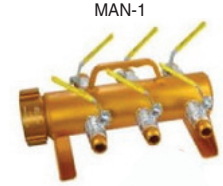


Standard flange adapters are supplied with raised face.

Flat faced flanges are available as an option. Add FF to the end of the base part number. EXAMPLE: FGS56 > FGS56FF

For ANSI Class 300 Flanges call for pricing and availability.

SIZE		Part Number	Finishes				
<i>See page 3 for color chart and proper ordering information.</i>							
<b>Adapter NH Rigid Rocker Lug Female x GHT Male "Y"</b>							
1.5"	GHT "Y"	40H15FGG	Chrome (-C)	Powder Coat (-Pxx)	KBrite (-KBR)	Hardcoat (-Hxx)	Anodized (-Axx)
2.5"	GHT "Y"	40H25FGG					
<b>Manifold NH Swivel Rocker Lug Female x (2) GHT Male "Y"</b>							
1.5"	GHT "Y" (2)	40M15		Powder Coat (-Pxx)	KBrite (-KBR)	Hardcoat (-Hxx)	Anodized (-Axx)
<b>Manifold NH Female Swivel Rocker Lug X (6) GHT Male HP</b>							
1.5"	GHT HP (6)	MAN-1		Powder Coat (-Pxx)	KBrite (-KBR)	Hardcoat (-Hxx)	Anodized (-Axx)
2.5"	GHT HP (6)	MAN-2					



*Please call (860) 963-3377 for pricing and availability.*

Red Rubber Booster Hose		
Hose Diameter	Part Number	Description
3/4"	KRBH75-50-3-H51	1" NH Swivel Female x 1" NH Male x 50'
3/4"	KRBH75-100-3-H51	1" NH Swivel Female x 1" NH Male x 100'
3/4"	KRBH75-150-3-H51	1" NH Swivel Female x 1" NH Male x 150'
1"	KRBH10-50-3-H51	1" NH Swivel Female x 1" NH Male x 50'
1"	KRBH10-100-3-H51	1" NH Swivel Female x 1" NH Male x 100'
1"	KRBH10-150-3-H51	1" NH Swivel Female x 1" NH Male x 150'

Lightweight – Red Booster Hose (also available in GREEN)		
Hose Diameter	Part Number	Description
1"	KBH10-25-3-H51	1" NH Swivel Female x 1" NH Male x 25'
1"	KBH10-50-3-H51	1" NH Swivel Female x 1" NH Male x 50'
1"	KBH10-75-3-H51	1" NH Swivel Female x 1" NH Male x 75'
1"	KBH10-100-3-H51	1" NH Swivel Female x 1" NH Male x 100'



Lightweight – Red Booster Hose w/ Field Repairable Coupling (also available in GREEN)		
Hose Diameter	Part Number	Description
1"	KBH10FR-25-3-H51	1" NH Swivel Female x 1" NH Male x 25'
1"	KBH10FR-50-3-H51	1" NH Swivel Female x 1" NH Male x 50'
1"	KBH10FR-75-3-H51	1" NH Swivel Female x 1" NH Male x 75'
1"	KBH10FR-100-3-H51	1" NH Swivel Female x 1" NH Male x 100'

Please call for custom hose lengths.

Storz x Storz Double Jacket Thermoplastic Lined Synthetic LDH		
Coupling Size	Part Number	Description
(2) 4"	DJP4072-2	Storz x 25' Hose Length (White)
(2) 4"	DJP4072-1	Storz x 25' Hose Length (Yellow)
(2) 5"	DJP5072-2	Storz x 25' Hose Length (White)
(2) 5"	DJP5072-1	Storz x 25' Hose Length (Yellow)
(2) 4"	DJP4071-2	Storz x 50' Hose Length (White)
(2) 4"	DJP4071-1	Storz x 50' Hose Length (Yellow)
(2) 5"	DJP5071-2	Storz x 50' Hose Length (White)
(2) 5"	DJP5071-1	Storz x 50' Hose Length (Yellow)
(2) 4"	DJP407-2	Storz x 100' Hose Length (White)
(2) 4"	DJP407-1	Storz x 100' Hose Length (Yellow)
(2) 5"	DJP507-2	Storz x 100' Hose Length (White)
(2) 5"	DJP507-1	Storz x 100' Hose Length (Yellow)



Storz x Storz Rubber Covered		
Coupling Size	Part Number	Description
(2) 4"	RC4078-1	Storz x 50' Hose Length (Yellow)
(2) 4"	RC4078-2	Storz x 25' Hose Length (Yellow)
(2) 4"	RC4078	Storz x 100' Hose Length (Yellow)
(2) 5"	RC5078-1	Storz x 50' Hose Length (Yellow)
(2) 5"	RC5078-2	Storz x 25' Hose Length (Yellow)
(2) 5"	RC5078	Storz x 100' Hose Length (Yellow)



Please call for coupling finish options and other hose colors and sizes.  
Hose diameter matches with the coupling size.

Double Jacket Thermoplastic Lined NH Long Handle Female		
Coupling Size	Part Number	Description
4.5" x 4"	DJP4581	4.5" x 4" NH Long Handle Female x 10' Hose Length (white)
(2) 4.5"	DJP458	(2) 4.5" NH Long Handle Female x 10' Hose Length (white)
5" x 4.5"	DJP5081	5" x 4.5" NH Long Handle Female x 10' Hose Length (white)
(2) 5"	DJP508	(2) 5" NH Long Handle Female x 10' Hose Length (white)
6" x 4.5"	DJP6081	6" x 4.5" NH Long Handle Female x 10' Hose Length (white)
6" x 5"	DJP6083	6" x 5" NH Long Handle Female x 10' Hose Length (white)
(2) 6"	DJP608	6" x 6" NH Long Handle Female x 10' Hose Length (white)



Double Jacket Thermoplastic Lined Storz x NH Long Handle Female		
Coupling Size	Part Number	Description
4" x 4.5"	DJP54071	Storz x NH Long Handle Female x 10' Hose Length (white)
4" x 6"	DJP54074	Storz x NH Long Handle Female x 10' Hose Length (white)
5" x 4.5"	DJP55071	Storz x NH Long Handle Female x 10' Hose Length (white)
5" x 5"	DJP5075	Storz x NH Long Handle Female x 10' Hose Length (white)
5" x 6"	DJP5076	Storz x NH Long Handle Female x 10' Hose Length (white)



Long Handle Female x Long Handle Female (Rubber Covered)		
Coupling Size	Part Number	Description
4.5" x 4"	RC4581	NH Long Handle Female x 10' (Yellow)
(2) 4.5"	RC458	NH Long Handle Female x 10' (Yellow)
5" x 4.5"	RC5081	NH Long Handle Female x 10' (Yellow)
(2) 5"	RC508	NH Long Handle Female x 10' (Yellow)
6" x 4.5"	RC6081	NH Long Handle Female x 10' (Yellow)
6" x 5"	RC6082	NH Long Handle Female x 10' (Yellow)
(2) 6"	RC608	NH Long Handle Female x 10' (Yellow)



Storz x Long Handle Female (Rubber Covered)		
Coupling Size	Part Number	Description
4" x 4.5"	RC4071-P18-P09	Storz x Long Handle Female x 10' (Yellow)
4" x 5"	RC4073-P18-P09	Storz x Long Handle Female x 10' (Yellow)
4" x 6"	RC4075-P18-P09	Storz x Long Handle Female x 10' (Yellow)
5" x 4.5"	RC5071-P18-P09	Storz x Long Handle Female x 10' (Yellow)
5" x 5"	RC5075-P18-P09	Storz x Long Handle Female x 10' (Yellow)
5" x 6"	RC5073-P18-P09	Storz x Long Handle Female x 10' (Yellow)



Other hose colors and couplings combinations are available, please call for more information.  
Hose Diameter: 5"

Part Number	Size & Description
<b>Hose Clamp</b>	
K47	Forestry Shutoff Clamp for 1" and 1.5" Single Jacket Hose Only
<b>Hose Line Tees (Natural Hardcoat)</b>	
HLT111-H51	1" NPSH Female x 1" NPSH Male x 1" NPSH Branch
HLT15151-H51	1.5" NH Female x 1.5" NH Male x 1" NPSH Branch
<b>Hose Roller</b>	
KHR-1-P18	One Man (Black powder coat)
KHR-2-P18	Two Man (Black powder coat)



K47



KHR-2



KHR-1

Long Handle Female x Rocker Lug Male		
Coupling Size	Part Number	Description
{*} 2.5"	P251-10-A52	NH Long Handle Female & NH Rocker Lug Male x 10'
3"	P301-10-A52	NH Long Handle Female & NH Rocker Lug Male x 10'
4"	2P401-10-A52	NH Long Handle Female & NH Rocker Lug Male x 10'
{**} 4.5"	2P451-10-A52	NH Long Handle Female & NH Rocker Lug Male x 10'
5"	2P501-10-A52	NH Long Handle Female & NH Rocker Lug Male x 10'
6"	2P601-10-A52	NH Long Handle Female & NH Rocker Lug Male x 10'



NH Folding Long Handle Female x NH Rocker Lug Male		
Coupling Size	Part Number	Description
4"	2P401FLH -10-A52	NH Folding Long Handle Female x NH Rocker Lug Male x 10'
5"	2P501FLH -10-A52	NH Folding Long Handle Female x NH Rocker Lug Male x 10'
6"	2P601FLH -10-A52	NH Folding Long Handle Female x NH Rocker Lug Male x 10'



Rocker Lug Female x Rocker Lug Male		
Coupling Size	Part Number	Description
1.5"	P152-10-H51	NH Rocker Lug Female x NH Rocker Lug Male x 10'
{*} 2.5"	P252-10-A52	NH Rocker Lug Female x NH Rocker Lug Male x 10'
3"	P302-10-A52	NH Rocker Lug Female x NH Rocker Lug Male x 10'
4"	2P402-10-A52	NH Rocker Lug Female x NH Rocker Lug Male x 10'
{**} 4.5"	2P452-10-A52	NH Rocker Lug Female x NH Rocker Lug Male x 10'
5"	2P502-10-A52	NH Rocker Lug Female x NH Rocker Lug Male x 10'
6"	2P602-10-A52	NH Rocker Lug Female x NH Rocker Lug Male x 10'



Storz x Storz		
Coupling Size	Part Number	Description
{*} 2.5"	2P257-10-A52	Storz x 10' PVC Suction Hose
3"	2P307-10-A52	Storz x 10' PVC Suction Hose
4"	2P407-10-A52	Storz x 10' PVC Suction Hose
5"	2P507-10-A52	Storz x 10' PVC Suction Hose
6"	2P607-10-A52	Storz x 10' PVC Suction Hose



Storz Folding Long Handle x Storz Folding Long Handle		
Coupling Size	Part Number	Description
4"	2P405-10-A52	Storz Folding Long Handle x 10' PVC Suction Hose
5"	2P505-10-A52	Storz Folding Long Handle x 10' PVC Suction Hose
6"	2P605-10-A52	Storz Folding Long Handle x 10' PVC Suction Hose



Storz Rigid Long Handle x Storz Rigid Long Handle		
Coupling Size	Part Number	Description
5"	2P506-10-A52	Storz Rigid Long Handle x 10' PVC Suction Hose

Camlock Female x Camlock Male		
Coupling Size	Part Number	Description
4"	2P404-10-A52	Camlock Female x Camlock Male x 10' PVC Suction Hose
5"	2P504-10-A52	Camlock Female x Camlock Male x 10' PVC Suction Hose
6"	2P604-10-A52	Camlock Female x Camlock Male x 10' PVC Suction Hose



Hose diameter matches with the coupling size, except (\*) that uses 3" diameter hose and (\*\*) that uses 5" diameter hose.

Suction Hose Test Kit	
Part Number	Description
SHTK- PUMP	Suction Hose Test Kit - With Pump Included
SHTK	Suction Hose Test Kit - With 2.5 NH Vacuum Port Adapter; No Pump



Part Number	DESCRIPTION
<b>FOR LIGHT WEIGHT BOOSTER HOSE</b>	
<b>Field Repairable – Natural hardcoat hose ends</b>	
RTCI1751-2-H51	1" Coupling Set: 1" NH Pinlug Female x 1" NH Male
<b>FOR PVC SUCTION HOSE</b>	
<b>Replacement Coupling Set: Long Handle – Black anodized hose ends</b>	
2CG401-A52	Coupling Set: 4" NH Long Handle Female x 4" NH Rocker Lug Male for 4" Hose
2CG451-A52	Coupling Set: 4.5" NH Long Handle Female x 4.5" NH Rocker Lug Male for 5" Hose
2CG501-A52	Coupling Set: 5" NH Long Handle Female x 5" NH Rocker Lug Male for 5" Hose
2CG601-A52	Coupling Set: 6" NH Long Handle Female x 6" NH Rocker Lug Male for 6" Hose
<b>Replacement Coupling Set: Rocker Lug – Black anodized hose ends</b>	
2CG402-A52	Coupling Set: 4" NH Rocker Lug Female x 4" NH Rocker Lug Male for 4" Hose
2CG452-A52	Coupling Set: 4.5" NH Rocker Lug Female x 4.5" NH Rocker Lug Male for 5" Hose
2CG502-A52	Coupling Set: 5" NH Rocker Lug Female x 5" NH Rocker Lug Male for 5" Hose
2CG602-A52	Coupling Set: 6" NH Rocker Lug Female x 6" NH Rocker Lug Male for 6" Hose
<b>Replacement Coupling: Storz (individual) – Black anodized hose ends</b>	
2CG407-A52	Coupling: 4" Storz (Individual coupling) for 4" Hose
2CG507-A52	Coupling: 5" Storz (Individual coupling) for 5" Hose
2CG607-A52	Coupling: 6" Storz (Individual coupling) for 6" Hose
<b>Replacement Coupling: Storz Folding Long Handle (individual) – Black anodized hose ends</b>	
2CG405-A52	Coupling: 4" Storz Folding Long Handle (Individual coupling) for 4" Hose
2CG505-A52	Coupling: 5" Storz Folding Long Handle (Individual coupling) for 5" Hose
2CG605-A52	Coupling: 6" Storz Folding Long Handle (Individual coupling) for 6" Hose
<b>FOR SOFT SUCTION &amp; LDH HOSE</b>	
<b>Replaceable Coupling Sets for 4" Hose, Long Handle</b>	
SRC4401	4" Field Replaceable Coupling Sets: 4" NH Long Handle Female x 4" NH Rocker Lug Male
SRC4451	4" Field Replaceable Coupling Sets: 4.5" NH Long Handle Female x 4.5" NH Rocker Lug Male
SRC4501	4" Field Replaceable Coupling Sets: 5" NH Long Handle Female x 5" NH Rocker Lug Male
SRC4601	4" Field Replaceable Coupling Sets: 6" NH Long Handle Female x 6" NH Rocker Lug Male
<b>Replaceable Coupling Sets for 4" Hose, Rocker Lug</b>	
SRC4402	4" Field Replaceable Coupling Sets: 4" NH Rocker Lug Female x 4" NH Rocker Lug Male
SRC4452	4" Field Replaceable Coupling Sets: 4.5" NH Rocker Lug Female x 4.5" NH Rocker Lug Male
SRC4502	4" Field Replaceable Coupling Sets: 5" NH Rocker Lug Female x 5" NH Rocker Lug Male
SRC4602	4" Field Replaceable Coupling Sets: 6" NH Rocker Lug Female x 6" NH Rocker Lug Male
<b>For Soft Suction &amp; LDH Hose, Storz, Replacement for 4" Hose</b>	
SRC4407	4" Field Replaceable Coupling Sets: 4" Storz x 4" Storz
SRC4507	4" Field Replaceable Coupling Sets: 5" Storz x 5" Storz
<b>Replaceable Coupling Sets for 5" Hose, Long Handle</b>	
SRC5401	5" Field Replaceable Coupling Sets: 4" NH Long Handle Female x 4" NH Rocker Lug Male
SRC5451	5" Field Replaceable Coupling Sets: 4.5" NH Long Handle Female x 4.5" NH Rocker Lug Male
SRC5501	5" Field Replaceable Coupling Sets: 5" NH Long Handle Female x 5" NH Rocker Lug Male
SRC5601	5" Field Replaceable Coupling Sets: 6" NH Long Handle Female x 6" NH Rocker Lug Male
<b>Replaceable Coupling Sets for 5" Hose, Rocker Lug</b>	
SRC5402	5" Field Replaceable Coupling Sets: 4" NH Rocker Lug Female x 4" NH Rocker Lug Male
SRC5452	5" Field Replaceable Coupling Sets: 4.5" NH Rocker Lug Female x 4.5" NH Rocker Lug Male
SRC5502	5" Field Replaceable Coupling Sets: 5" NH Rocker Lug Female x 5" NH Rocker Lug Male
SRC5602	5" Field Replaceable Coupling Sets: 6" NH Rocker Lug Female x 6" NH Rocker Lug Male
<b>Replaceable Coupling Sets for 5" Hose, Storz</b>	
SRC5407	5" Field Replaceable Coupling Sets: 4" Storz x 4" Storz
SRC5507	5" Field Replaceable Coupling Sets: 5" Storz x 5" Storz
<b>Replaceable Coupling Sets for 6" Hose, Storz</b>	
SRC6507	6" Field Replaceable Coupling Sets: 5" Storz x 5" Storz
SRC6607	6" Field Replaceable Coupling Sets: 6" Storz x 6" Storz

RTCI1751-2-H50



2CG451-A52



2CG452-A52



2CG605-A52



SRC6607-P09



SRC5507-P09



All Field Repairable Hose Couplings do come with collars and hardware.

SIZE		Part Number	Finishes				
NH Thread	NH Thread		<i>See page 3 for color chart and proper ordering information.</i>				
		<b>Hydrant Conversion Bushing (Includes Set Screws) Female x Male</b>					
2.5"	2.5"	HCB25X25	Chrome (-C)	Powder Coat (-Pxx)	KBrite (-KBR)	Hardcoat (-Hxx)	Anodized (-Axx)
4.5"	4.5"	HCB45X45	Chrome (-C)	Powder Coat (-Pxx)	KBrite (-KBR)	Hardcoat (-Hxx)	Anodized (-Axx)
<b>NH Thread</b>		<b>Hydrant Cap</b>					
2.5"	-	CP2553-001	Chrome (-C)	Powder Coat (-Pxx)	KBrite (-KBR)	Hardcoat (-Hxx)	Anodized (-Axx)
4.5"	-	CP4553-001	Chrome (-C)	Powder Coat (-Pxx)	KBrite (-KBR)	Hardcoat (-Hxx)	Anodized (-Axx)
<b>Storz</b>		<b>Storz Hydrant Converters w/ 3 Set Screws, Hi-Visibility Reflective Tape &amp; Low Profile Nut Cap</b>					
4"	4.5"	SZMC4045-3	Chrome (-C)	Powder Coat (-Pxx)	KBrite (-KBR)	Hardcoat (-Hxx)	Anodized (-Axx)
5"	4.5"	SZMC5045-3	Chrome (-C)	Powder Coat (-Pxx)	KBrite (-KBR)	Hardcoat (-Hxx)	Anodized (-Axx)
<b>Storz</b>		<b>Storz Hydrant Converters w/ 2 Set Screws, Hi-Visibility Reflective Tape &amp; Mushroom Storz Cap</b>					
4"	4.5"	SZMC4045-7	Chrome (-C)	Powder Coat (-Pxx)	KBrite (-KBR)	Hardcoat (-Hxx)	Anodized (-Axx)
5"	4.5"	SZMC5045-7	Chrome (-C)	Powder Coat (-Pxx)	KBrite (-KBR)	Hardcoat (-Hxx)	Anodized (-Axx)
<b>Storz</b>		<b>Storz Hydrant Converters w/ 2 Set Screws, Hi-Visibility Reflective Tape &amp; Standard Storz Cap</b>					
4"	4.5"	SZMC4045-2	Chrome (-C)	Powder Coat (-Pxx)	KBrite (-KBR)	Hardcoat (-Hxx)	Anodized (-Axx)
<b>Storz</b>		<b>Storz Hudrant Converters w/2 set screws &amp; Standard Storz Cap</b>					
5"	4.5"	SZMC5045-2	Chrome (-C)	Powder Coat (-Pxx)	KBrite (-KBR)	Hardcoat (-Hxx)	Anodized (-Axx)

SZMC5045-3-P07



SZMC4045-3-P18



SZMC5045-2-P04

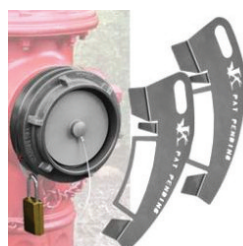
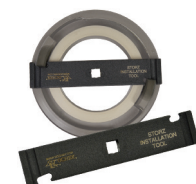


SZMC5045-2-H51



Part Number	Storz Hydrant Converter Accessories
SZMC-IW-P15	Installation Wrench, Black Wrinkle powder coat, For 4" and 5" Storz
SSMSL4	Storz Security Lock, 4" Stainless Steel Metal Storz Lock For Use w/ Padlocks (Pair)
SSMSL5	Storz Security Lock, 5" Stainless Steel Metal Storz Lock For Use w/ Padlocks (Pair)

SCMC-IW-P15  
Installation Wrench



SSMSL5  
Storz Security Lock

Part Number	Size & Description
<b>Fan/Straight</b>	
NZ027-P07-P18	Dual Size GHT & 1" NPSH Jet And Fan Nozzle
NZ037-P07-P18	Dual Thread 1" NH & 1" NPSH Jet And Fan Nozzle
<b>GHT</b>	
NZ016-A52-A62	10 to 24 GPM w/ Bumper
NZ017-A52-A62	35 GPM w/ Bumper
<b>NH</b>	
NZ021-A52-A62	1" 35 GPM w/ Bumper
NZ025-A52-A62	1" 10 to 24 GPM w/ Bumper
NZ026-A52-A62	1" 20 to 60 GPM w/ Bumper
NZ026-HV-A52-A62	1" 20 to 100 GPM w/ Bumper
NZ011-A52-A62	1.5" 20 to 60 GPM w/ Bumper
NZ024-A52-A62	1.5" Straight Bore w/ 4 Settings
<b>NPSH</b>	
NZ008-A52-A62	1" 10 to 25 GPM w/out Bumper w/Shutoff
NZ009-A52-A62	1" 10 to 24 GPM w/ Bumper
NZ010-A52-A62	1" 35 GPM w/ Bumper
NZ012-A52-A62	1.5" 20 to 60 GPM w/ Bumper
NZ015-A52-A62	1" 20 to 60 GPM w/ Bumper
NZ015-HV-A52-A62	1" 20 to 100 GPM High Volume w/ Bumper
NZ028-A52-A62	1" Multi-Mist w/ Assorted Tips
NZ030-A52-A62	1" 100 GPM High Volume w/ Bumper
<b>Shut Off</b>	
PG11-A52	Pistol Grip Shut off 1" NH Full Time Swivel Female x 1" NH Male
PG115-A52	Pistol Grip Shut off 1" NH Full Time Swivel Female x 1.5" NH Male
PG1515-A52	Pistol Grip Shut off 1.5" NH Full Time Swivel Female x 1.5" NH Male
BV11-A52	Bail Shut off 1" NH Full Time Swivel Female x 1" NH Male
BV115-A52	Bail Shut off 1" NH Full Time Swivel Female x 1.5" NH Male
BV1515-A52	Bail Shut off 1.5" NH Full Time Swivel Female x 1.5" NH Male
<b>Nozzle Tips</b>	
NZ034-KBR	Fog Nozzle, .75-11.5 NH (GHT) Female
NZ002-H51	Fire Hose, 3/8" Tip x .75-11.5 NH Female
NZ013-H51	Fire Hose, 3/8" Straight Bore Tip x .75-11.5 NH (GHT) Female
NZ020-H51	Fire Hose, 1/4" Tip x .75-11.5 NH Female
<b>Chimney Nozzle</b>	
NZ005-KBR	1.5" NH with (8) Brass Fog Nozzles
NZ004-KBR	1.5" NPSH with (8) Brass Fog Nozzles



Pistol Grip Shut Off  
(Nozzle Sold Separately)



Nozzle Tips



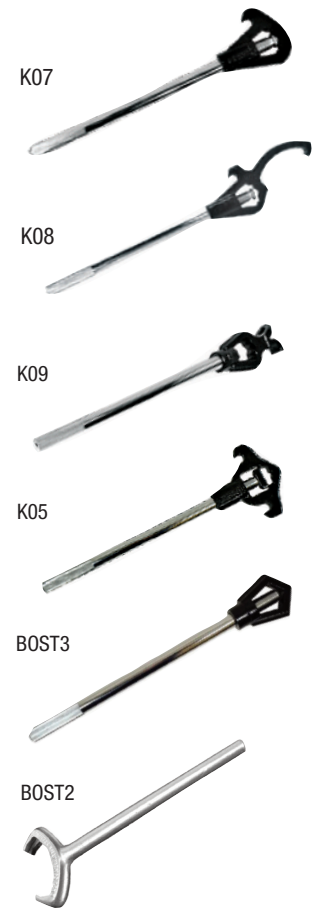
NZ005-KBR



NZ027- P07-18



Part Number	Size & Description
<b>Hammers</b>	
K03-H-Pxx	Hydrant Hammer
<b>Holders</b>	
CAA19-Pxx or -KBR	Holder For Up To 4 Storz x Spanner Wrenches
K46-Pxx or -KBR	Double Holder
K48-Pxx or -KBR	Triple Holder
<b>Spanners</b>	
BOST2-Pxx or -KBR	Skipper Combination Spanner Wrench
KS3-Pxx or -KBR	4" & 5" Storz x Universal Spanner Wrench
KS31-Pxx or -KBR	6" Storz x Universal Spanner
K01-Pxx or -KBR	Universal Spanner Wrench .75" to 6"
<b>*Spanner/Wrench Sets</b>	
K45-3-Pxx or -KBR	Set-Triple Holder (1) K05 Hydrant Wrench & (2) K01 Spanner Wrenches
K46-2-Pxx or -KBR	Set Double Holder With (2) K01 Spanner Wrenches
K48-3-Pxx or -KBR	Set-Triple Holder, (1) K07 Hydrant Wrench (2) K01 Spanner Wrenches
K49-3-Pxx or -KBR	Set-Triple Holder(1)K08 Storz Hydrant Wrench&(2)K01 Spanner Wrenches
KS34-Pxx or -KBR	Set Of 4: 4", 5" Storz x Universal Spanner Wrench w/Holder
KS314-Pxx or -KBR	Set Of 4: 6" Storz x Universal Spanner Wrench w/Holder7
<b>Wrenches</b>	
BW-01-Pxx or -KBR	Booster Hose Wrench
K05-Pxx	Adjustable Hydrant Wrench Double Head Spanner
K07-Pxx	Adjustable Hydrant Wrench Single Head Spanner
K09-Pxx	Adjustable Hydrant Wrench with Pinlug & n20" Handle
BOST3-Pxx	Heavy Duty Hydrant Wrench
K08-Pxx	Adjustable Storz Hydrant Wrench



\*Spanner/Wrench Sets If you want both the holder and wrenches the same color use 1 suffix (i.e., -P09), otherwise if you prefer to have them different colors, the 1st suffix should be the holder, and the 2nd suffix should be the wrench (i.e., -P18-P09).

\*\*If ordered in -KBR finish, the hydrant wrench will be supplied in -P18, the hydrant wrench is cast iron and therefore must be powder coated.



## Floating Strainers (Self Leveling with Full Time Swivel)

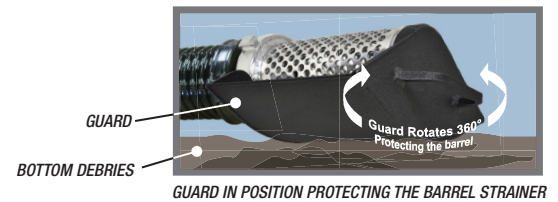
SIZE	NH ROCKER LUG	STORZ	CAMLOCK
	Part Number	Part Number	Part Number
1.5"	FBS15-P07-P09	FBS157-P07-P09-P18	FBS154-P07-P09
1.5" FV	FBS15FV-P07-P09	-	-
2.5"	FBS25-P07-P09	FBS257-P07-P09-P18	FBS254-P07-P09
2.5" FV	FBS25FV-P07-P09-P18	-	-
3"	FBS30-P07-P09	FBS307-P07-P09-P18	FBS304-P07-P09
3" FV	FBS30FV-P07-P09-P18	-	-
4"	FBS40-P07-P09	FBS407-P07-P09-P18	FBS404-P07-P09
4" FV	FBS40FV-P07-P09	-	-
4.5"	FBS45-P07-P09	-	-
4.5" FV	FBS45FV-P07-P09	-	-
5"	FBS50-P07-P09	FBS507-P07-P09-P18	FBS504-P07-P09
5" FV	FBS50FV-P07-P09	-	-
6"	FBS60-P07-P09	FBS607-P07-P09-P18	FBS604-P07-P09
6" FV	FBS60FV-P07-P09	-	-
6" w/8" tubing	FBS602-P07-P09	-	-
6" w/8" tubing FV	FBS602FV-P07-P09	-	-



Other Powder Coat colors available. Please call.

## Barrel Strainers with Swivel Bottom Guard

SIZE	NH ROCKER LUG	STORZ	CAMLOCK
	Part Number	Part Number	Part Number
2.5"	BS25BG-P15-P09	BS257BG-P15-P09-P18	BS254BG-P15-P09
2.5" FV	BS25BGFV-P15-P09-P18	-	-
3"	BS30BG-P15-P09	BS307BG-P15-P09-P18	BS304BG-P15-P09
3" FV	BS30BGFV-P15-P09-P18	-	-
4"	BS40BG-P15-P09	BS407BG-P15-P09-P18	BS404BG-P15-P09
4" FV	BS40BGFV-P15-P09	-	-
4.5"	BS45BG-P15-P09	-	-
4.5" FV	BS45BGFV-P15-P09	-	-
5"	BS50BG-P15-P09	BS507BG-P15-P09-P18	BS504BG-P15-P09
5" FV	BS50BGFV-P15-P09	-	-
6"	BS60BG-P15-P09	BS607BG-P15-P09-P18	BS604BG-P15-P09
6" FV	BS60BGFV-P15-P09	-	-
6" w/8" tubing	BS602BG-P15-P09	-	-
6" w/8" tubing FV	BS602BGFV-P15-P09	-	-



## Barrel Strainers

SIZE	NH FEMALE - Silvadillo	NH FEMALE - Chrome	STORZ - Silvadillo	CAMLOCK - Silvadillo
	Part Number	Part Number	Part Number	Part Number
1.5" w/Poppet	BS151-H51	-	-	-
2.5"	BS25-P09	BS25-C	BS257-P18-P09	BS254-P18-P09
2.5" FV	BS25FV-P09	-	BS257FV-P18-P09	BS254FV-P18-P09
3"	BS30-P09	BS30-C	BS307-P18-P09	BS304-P09
3" FV	BS30FV-P09	-	BS307FV-P18-P09	BS304FV-P18-P09
4"	BS40-P09	BS40-C	BS407-P18-P09	BS404-P09
4" FV	BS40FV-P09	-	BS407FV-P18-P09	BS404FV-P09
4.5"	BS45-P09	BS45-C	-	-
4.5" FV	BS45FV-P09	-	-	-
5"	BS50-P09	BS50-C	BS507FV-P18-P09	BS504-P09
5" FV	BS50FV-P09	-	BS507FV-P18-P09	BS504FV-P09
6"	BS60-P09	BS60-C	BS607FV-P18-P09	BS604-P09
6" FV	BS60FV-P09	-	BS607FV-P18-P09	BS604FV-P09
6" w/8" tubing	BS60-2-P09	-	-	-



Red type designates part with Foot Valve included.  
 Chrome finish and Other Powder Coat color available. Please call.

## Box Strainers

SIZE	NH ROCKER LUG	STORZ	CAMLOCK
	Part Number	Part Number	Part Number
1.5"	BX15-P18-P09	-	BX154-P18-P09
2.5"	BX25-P18-P09	BX257-P18-P09	BX254-P18-P09
3"	BX30-P18-P09	BX307-P18-P09	BX304-P18-P09
4"	BX40-P18-P09	BX407-P18-P09	BX404-P18-P09
4.5"	BX45-P18-P09	-	-
5"	BX50-P18-P09	BX507-P18-P09	BX504-P18-P09
6"	BX60-P18-P09	BX607-P18-P09	BX604-P18-P09



## Low Level Strainers with Jet Siphon (unless otherwise noted) and Internal Screen

SIZE	NH LONG HANDLE	STORZ	CAMLOCK
	Part Number	Part Number	Part Number
2.5"	LL25-P07-P18*	LL407-P07-P18*	LL254-P07*
2.5" FV	LL25FV-P07-P18*	LL25FV-P07-P18*	-
3"	LL30-P07-P18*	LL309-P07-P18*	LL304-P07*
3" FV	LL30FV-P07-P18*	LL307FV-P07-P18*	-
4"	LL40-P07-P18	LL407-P07-P18	LL404-P07
4" FV	LL40FV-P07-P18	LL407FV-P07-P18	-
4.5"	LL45-P07-P18	-	-
4.5" FV	LL45FV-P07-P18	-	-
5"	LL50-P07-P18	LL507FV-P07-P18	LL504-P07
5" FV	LL50FV-P07-P18	LL507FV-P07-P18	-
6"	LL60-P07-P18	LL607-P07-P18	LL604-P07
6" FV	LL60FV-P07-P18	LL607FV-P07-P18	-
6" w/8"	LL602-P07-P18*	-	-
6" FV w/8"	LL602FV-P07-P18*	-	-
6"	LL602-1-P07-P18	-	-



\* w/o jet siphon

Optional external screens available upon request

## Basement Strainers

SIZE	NH - LONG HANDLE	STORZ	CAMLOCK
	Part Number	Part Number	Part Number
2.5"	BL25-P18-P09	BL257-P18-P09	BL254-P09
3"	BL30-P18-P09	BL307-P18-P09	BL304-P09
4"	BL40-P18-P09	BL407-P18-P09	BL404-P09



## Strainer Brackets

Part Number	Description
FBSMB5-P18	Mounting Bracket for either 4" or 5" Floating Barrel Strainers
FBSMB6-P18	Mounting Bracket for a 6" Floating Barrel Strainer
LLMB-P18	Mounting Bracket for all sizes of Low Level Strainers

## Ice Strainers

SIZE	NH - LONG HANDLE	STORZ	CAMLOCK
	Part Number	Part Number	Part Number
4"	IS40-P07-P18	IS407-P07-P18	IS404-P07-P18
4.5"	IS45-P07-P18	-	-
5"	IS50-P07-P18	IS507-P07-P18	IS504-P07-P18
6"	IS60-P07-P18	IS607-P07-P18	IS604-P07-P18



Red type designates part with Foot Valve included.  
Other Powder Coat colors available. Please call.

## Gate Valves

### Fittings Finishes

See page 3 for color chart and proper ordering information.

Hardcoat



Hardcoat



Part Number	Size & Description
<b>Small Straight Valve</b>	
09K25204	GATE VALVE 2.5 NH SW RL F X 4 STORZ
09K25205	GATE VALVE 2.5 NH SW RL F X 5 STORZ W/LOCK
09K25225F	GATE VALVE 2.5 NH SW RL F X 2.5 NH SW RL F
09K25225M	GATE VALVE 2.5 NH SW RL F X 2.5 NH M
09K25225M-2	GATE VALVE 2.5 NH SW RL F X 2.5 NH M, W/ 1/4" HOLE
09KK25225M	GATE VALVE W/ KNOB HANDLE 2.5 NH SW RL F X 2.5 NH M
09KT25225M	GATE VALVE W/ T-HANDLE 2.5 NH SW RL F X 2.5 NH M
<b>With 25° Elbow and Relief</b>	
10K0404	GATE VALVE 4 STORZ X 4 STORZ 25° ELBOW W/ R.V.
10K0505	GATE VALVE 5 STORZ X 5 STORZ 25° ELBOW W/RELIEF VA
10K40104	GATE VALVE 4 NH SW LH F X 4 STORZ 25° ELBOW W/RELI
10K40105	GATE VALVE 4 NH SW LH F X 5 STORZ 25° ELBOW W/RELI
10K40204	GATE VALVE 4 NH SW RL F X 4 STORZ 25° ELBOW W/RELI
10K40205	GATE VALVE 4 NH SW RL F X 5 STORZ 25° ELBOW W/RELI
10K40240M	GATE VALVE 4 NH SW RL F X 4 NH M 25° ELBOW W/RELIE
10K406204	GATE VALVE 4 NPSH SW RL F X 4 STORZ 25° ELBOW W/RV
10K45104	GATE VALVE 4.5 NH SW LH F X 4 STORZ 25° ELBOW W/RE
10K45105	GATE VALVE 4.5 NH SW LH F X 5 STORZ 25° ELBOW W/RE
10K45145M	GATE VALVE 4.5 NH SW LH F X 4.5 NH M 25° ELB W/REL
10K45205	GATE VALVE 4.5 NH SW RL F X 5 STORZ 25° ELBOW W/RE
10K50104	GATE VALVE 5 NH SW LH F X 4 STORZ 25° ELBOW W/RELI
10K50105	GATE VALVE 5 NH SW LH F X 5 STORZ 25° ELBOW W/RELI
10K50204	GATE VALVE 5 NH SW RL F X 4 STORZ 25° ELBOW W/RELI
10K50205	GATE VALVE 5 NH SW RL F X 5 STORZ 25° ELBOW W/RELI
10K60104	GATE VALVE 6 NH SW LH F X 4 STORZ 25° ELBOW W/RELI
10K60105	GATE VALVE 6 NH SW LH F X 5 STORZ 25° ELB
10K60160M	GATE VALVE 6 NH SW LH F X 6 NH M 25° ELBOW W/RELIE
10K60204	GATE VALVE 6 NH SW RL F X 4 STORZ 25° ELBOW W/RELI
10K60205	GATE VALVE 6 NH SW RL X 5 STORZ 25° ELB W/RELIEF
10K60260M	GATE VALVE 6 NH SW RL F X 6 NH M 25° ELBOW W/RELIE

### Valve Body Aluminum Powder Coat Finish

\* Special threads and custom configurations are available upon request. Please call to discuss your requirements.

09K25225M



10K60105



## Gate Valves

### Fittings Finishes

See page 3 for color chart and proper ordering information.

Hardcoat



Hardcoat



### Valve Body Aluminum Powder Coat Finish

\* Special threads and custom configurations are available upon request. Please call to discuss your requirements.

Part Number	Size & Description
<b>With 25° Elbow and No Relief</b>	
11K0404	GATE VALVE 4 STORZ X 4 STORZ 25° ELBOW
11K0505	GATE VALVE 5 STORZ X 5 STORZ 25° ELBOW
11K40104	GATE VALVE 4 NH SW LH F X 4 STORZ 25° ELBOW
11K40105	GATE VALVE 4 NH SW LH F X 5 STORZ 25° ELBOW
11K40140M	GATE VALVE 4 NH SW LH F X 4 NH M 25° ELBOW
11K40204	GATE VALVE 4 NH SW RL F X 4 STORZ 25° ELBOW
11K40205	GATE VALVE 4 NH SW RL F X 5 STORZ 25° ELBOW
11K45104	GATE VALVE 4.5 NH SW LH F X 4 STORZ 25° ELBOW
11K45105	GATE VALVE 4.5 NH SW LH F X 5 STORZ 25° ELBOW
11K45145M	GATE VALVE 4.5 NH SW LH F X 4.5 NH M, 25° ELBOW
11K45204	GATE VALVE 4.5 NH SW RL F X 4 STORZ 25° ELBOW
11K45205	GATE VALVE 4.5 NH SW RL F X 5 STORZ 25° ELBOW
11K45245M	GATE VALVE 4.5 NH SW RL F X 4.5 NH M 25° ELBOW
11K50104	GATE VALVE 5 NH SW LH F X 4 STORZ 25° ELBOW
11K50204	GATE VALVE 5 NH SW RL F X 4 STORZ 25° ELBOW
11K50205	GATE VALVE 5 NH SW RL F X 5 STORZ 25° ELBOW
11K60104	GATE VALVE 6 NH SW LH F X 4 STORZ 25° ELBOW
11K60105	GATE VALVE 6 NH SW LH F X 5 STORZ 25° ELBOW
11K60204	GATE VALVE 6 NH SW RL F X 4 STORZ 25° ELBOW
11K60205	GATE VALVE 6 NH SW RL F X 5 STORZ 25° ELBOW
11K60260M	GATE VALVE 6 NH SW RL F X 6 NH M 25° ELBOW
<b>Large Straight Valve</b>	
12K0404	GATE VALVE 4 STORZ X 4 STORZ
12K0505	GATE VALVE 5 STORZ X 5 STORZ
12K0606	GATE VALVE 6 STORZ X 6 STORZ
12K40104	GATE VALVE 4 NH SW LH F X 4 STORZ
12K40105	GATE VALVE 4 NH SW LH F X 5 STORZ
12K40204	GATE VALVE 4 NH SW RL F X 4 STORZ
12K40205	GATE VALVE 4 NH SW RL F X 5 STORZ
12K40240M	GATE VALVE 4 NH SW RL F X 4 NH M
12K45104	GATE VALVE 4.5 NH SW LH F X 4 STORZ
12K45105	GATE VALVE 4.5 NH SW LH F X 5
12K45145M	GATE VALVE 4.5 NH SW LH F X 4.5 NH M
12K45204	GATE VALVE 4.5 NH SW RL F X 4 STZ
12K45205	GATE VALVE 4.5 NH SW RL F X 5 STORZ
12K45245M	GATE VALVE 4.5 NH SW RL F X 4.5 NH M
12K50104	GATE VALVE 5 NH SW LH F X 4 STORZ
12K50105	GATE VALVE 5 NH SW LH F X 5 STORZ
12K50204	GATE VALVE 5 NH SW RL F X 4 STORZ
12K50205	GATE VALVE 5 NH SW RL F X 5 STORZ
12K60104	GATE VALVE 6 NH SW LH F X 4 STORZ
12K60105	GATE VALVE 6 NH SW LH F X 5 STORZ
12K60160M	GATE VALVE 6 NH SW LH F X 6 NH M
12K60204	GATE VALVE 6 NH SW RL F X 4 STORZ
12K60205	GATE VALVE 6 NH SW RL F X 5 STORZ
12K60260M	GATE VALVE 6 NH SW RL F X 6 NH M

11K60104



12K45105



## Siamese Valves

### Fittings Finishes

See page 3 for color chart and proper ordering information.

Hardcoat



Hardcoat



### Valve Body Aluminum Powder Coat Finish

20K40225



24K60M601



30K0525



50K0404



Part Number	Size & Description
<b>2 Inlet, 1 Outlet. Single Clapper</b>	
20K0425	SIAMESE 4 STORZ X (2) 2.5 NH SW RL F
20K0525	SIAMESE 5 STORZ X (2) 2.5 NH SW RL F
20K0525M	SIAMESE 5 STORZ X (2) 2.5 NH M
20K25225	SIAMESE 2.5 NH SW RL F X (2) 2.5 NH SW RL F
20K25225M	SIAMESE 2.5 NH SW RL F X (2) 2.5 NH M
20K25M25	SIAMESE 2.5 NH M X (2) 2.5 NH SW RL F
20K40225	SIAMESE 4 NH SW RL F X (2) 2.5 NH SW RL F
20K45225F	SIAMESE 4.5 NH SW RL F X (2) 2.5 NH RL SW F
20K45225M	SIAMESE 4.5 NH SW RL F X (2) 2.5 NH M
20K60225	SIAMESE 6 NH SW RL F X (2) 2.5 NH SW RL F
<b>Reversible. Open, No Clapper</b>	
24K60M601	VALVE WYE, 6 NH M X 6 NH M X 6 NH SW LH F
24K60M602	VALVE WYE, 6 NH M X 6 NH M X 6 NH SW RL F
<b>3 Inlet, 1 Outlet. Three Clappers</b>	
30K0425	SIAMESE 3-WAY CLAPD 4 STZ X (3) 2.5 NH SW RL
30K0525	SIAMESE 3 WAY CLAPPERED 5 STORZ X (3) 2.5 NH SW RL
30K60M25	SIAMESE 3 WAY CLAPPERED 6 NH M X (3) 2.5 NH SW RL F
<b>2 Inlet, 1 Outlet. Two Clappers</b>	
50K0404	JUMBO SIAMESE 4 STORZ X 4 STORZ X 4 STORZ
50K0504	JUMBO SIAMESE 5 STORZ X 4 STORZ X 4 STORZ
50K0505	JUMBO SIAMESE 5 STORZ X 5 STORZ X 5 STORZ

#### CLAPPER LAYOUT:

20K = SINGLE CLAPPER  
 24K = OPEN, NO CLAPPER  
 30K = THREE CLAPPERS  
 50K = TWO CLAPPERS

#### WATER FLOW DIRECTION:

20K = 2 > 1 ONLY  
 24K = REVERSIBLE  
 30K = 3 > 1 ONLY  
 50K = 2 > 1 ONLY

## Ball Valves

### Fittings Finishes

See page 3 for color chart and proper ordering information.

Hardcoat



Hardcoat



### Valve Body Aluminum Powder Coat Finish

21K25204



22K15025



23K0505



26K1525



HBV25



Part Number	Size & Description
<b>Gated WYE 2-Way</b>	
21K2505	2-WAY BALL VALVE (2) 2.5 NH M X 5 STORZ
21K25204	2-WAY BALL VALVE (2) 2.5 NH SW RL F X 4 STORZ
21K25205	2-WAY BALL VALVE (2) 2.5 NH SW RL F X 5 STORZ
21K25225M	2-WAY BALL VALVE (2) 2.5 NH SW RL F X 2.5 NH M
21K252402	2-WAY BALL VALVE (2) 2.5 NH SW RL F X 4 NH SW RL F
21K252502	2-WAY BALL VALVE (2) 2.5 NH SW RL F X 5 NH SW RL F
21K25252	2-WAY BALL VALVE (2) 2.5 NH M X 2.5 NH SW RL F
21K252601	2-WAY BALL VALVE (2) 2.5 NH SW RL F X 6 NH SW LH F
21K252602	2-WAY BALL VALVE (2) 2.5 NH SW RL F X 6 NH SW RL F
21K25302	2-WAY BALL VALVE (2) 2.5 NH M X 3 NH SW RL F
21K25401	2-WAY BALL VALVE (2) 2.5 NH M X 4 NH SW LH F
21K25402	2-WAY BALL VALVE (2) 2.5 NH M X 4 NH SW RL F
21K25451	2-WAY BALL VALVE (2) 2.5 NH M X 4.5 NH SW LH F
21K25452	2-WAY BALL VALVE (2) 2.5 NH M X 4.5 NH SW RL F
21K25502	2-WAY BALL VALVE (2) 2.5 NH M X 5 NH SW RL F
21K25602	2-WAY BALL VALVE (2) 2.5 NH M X 6 NH SW RL F
21K3004	2-WAY BALL VALVE (2) 3 NH M X 4 STORZ
<b>Gated WYE 2-Way</b>	
22K15015	2-WAY BALL VALVE (2) 1.5 NH M X 1.5 NH SW RL F
22K15025	2-WAY BALL VALVE (2) 1.5 NH M X 2.5 NH SW RL F
<b>Gated WYE 2-Way</b>	
23K0404	2 WAY BALL VALVE 4 STORZ X (2) 4 STORZ W/RL F
23K0504	2-WAY BALL VALVE 5 STORZ X (2) 4 STORZ W/RELIEF VALVE
23K0505	2-WAY BALL VALVE 5 STORZ X (2) 5 STORZ W/RV
<b>Gated WYE 2-Way</b>	
26K115	2-WAY BALL VALVE (2) 1 NH M X 1.5 NH SW F
26K125	2-WAY BALL VALVE (2) 1 NH M X 2.5 NH SW
26K1525	2-WAY BALL VALVE (2) 1.5 NH M X 2.5 NH SW RL F
<b>Straight Valve</b>	
HBV15	HYD BALL VALVE 1.5 NH SW RL F X 1.5 NH M
HBV25	HYD BALL VALVE 2.5 NH SW RL F X 2.5 NH M

\* Special threads and custom configurations are available upon request. Please call to discuss your requirements.

## Manifold Valves

### Fittings Finishes

See page 3 for color chart and proper ordering information.

Hardcoat      Hardcoat

### Valve Body Aluminum Powder Coat Finish

32K0525



Part Number	Size & Description
<b>Gated WYE 3-Way</b>	
32K0425	3-WAY MANIFOLD 4 STZ X 4 STZ X (2) 2.5 NH M W/RELIEF VALVE
32K0525	3-WAY MANIFOLD 5 STZ X 5 STZ X (2) 2.5 NH M W/RELIEF VALVE
32K052525	3-WAY MANIFOLD 5 STZ X (3) 2.5 NH M W/RELIEF VALVE
<b>Gated WYE 3-Way</b>	
33K2515	3-WAY BALL VALVE 2.5 NH SW RL F X 2.5 NH M X (2) 1
<b>Gated WYE 5-Way</b>	
51K0425	5-WAY MANIFOLD 4 STZ X 4 STZ X (4) 2.5 NH M
51K0525	5-WAY MANIFOLD 5 STZ X 5 STZ X (4) 2.5 NH M W/RELIEF VALVE
51K050425	5-WAY MANIFOLD 5 STZ X 4 STZ X (4) 2.5 NH M W/RELIEF VALVE
51K0530	5-WAY MANIFOLD 5 STZ X 5 STZ X (4) 3 NH M W/ RELIEF VALVE

## Intake Valves

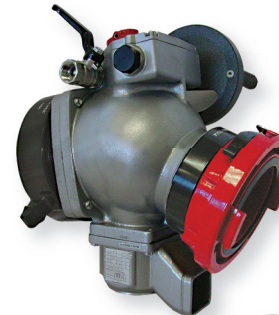
### Fittings Finishes

See page 3 for color chart and proper ordering information.

Hardcoat      Hardcoat

### Valve Body Aluminum Powder Coat Finish

55K60105T



60K60105



Part Number	Size & Description
<b>Ball Intake</b>	
55K50105	BALL INT VALVE 5 NH SW SH F X 5 STORZ W/RELIEF V
55K60104	BALL INT VALVE 6 NH SW SH F X 4 STORZ W/RLV
55K60104T	BALL INTAKE VALVE 6 NH SW SH F X 4 STORZ FTS W/R
55K60105	BALL INT VALVE 6 NH SW SH F X 5 STORZ W/RELIEF V
55K60105T	BALL INT VALVE 6 NH SW SH F X 5 STZ FTS W/RV
55K60106T	BALL INT VALVE 6 NH SW SH F X 6 STZ FTS W/RELIEF
55K60160M	BALL INT VALVE 6 NH SW SH F X 6 NH M W/RELIEF VA
<b>Piston Intake</b>	
60K50105	PISTON INT VALVE 5 NH SW SH F X 5 STORZ W/RELIEF V
60K60104	PISTON INT VALVE 6 NH SW SH F X 4 STORZ W/RLV
60K60104T	PISTON INTAKE VALVE 6 NH SW SH F X 4 STORZ FTS W/R
60K60105	PISTON INT VALVE 6 NH SW SH F X 5 STORZ W/RELIEF V
60K60105T	PISTON INT VALVE 6 NH SW SH F X 5 STZ FTS W/RV
60K60106T	PISTON INT VALVE 6 NH SW SH F X 6 STZ FTS W/RELIEF
60K60160M	PISTON INT VALVE 6 NH SW SH F X 6 NH M W/RELIEF VA

\* Special threads and custom configurations are available upon request. Please call to discuss your requirements.

## Hydrant Assist Valves

### Fittings Finishes

See page 3 for color chart and proper ordering information.

Hardcoat      Hardcoat

### Valve Body Aluminum Powder Coat Finish

80K04451



Part Number	Size & Description
80K04451	HYD VALVE 4 STZ X 4 STZ X 4 STZ X 4.5 NH SW LH F
80K05451	HYD VALVE 5 STZ X 5 STZ X 5 STZ X 4.5 NH SW LH F

## Butterfly Valves (Black Fittings & Gray Body)

### Fittings Finishes

See page 3 for color chart and proper ordering information.

Powdercoat

Hardcoat

Flange

Adapter

### Valve Body Gray Enamel Powder Coat Finish



Part Number	Size & Description
BFVL40140M	BUTTERFLY VALVE LEVER HANDLE 4 NH SW LH F X 4 NH M
BFVL45145M	BUTTERFLY VALVE LEVER HANDLE 4.5 NH SW LH F X 4.5
BFVL50104	BUTTERFLY VALVE LEVER HANDLE 5 NH SW LH F X 4 STZ
BFVL50150M	BUTTERFLY VALVE LEVER HANDLE 5 NH SW LH F X 5 NH M
BFVL60105	BUTTERFLY VALVE LEVER HANDLE 6 NH SW LH F X 5 STZ
BFVL60160M	BUTTERFLY VLV LVR HNDL 6 NH SW LH F X 6 NH M
BFVT40140M	BUTTERFLY VALVE TURN HANDLE 4 NH SW LH F X 4 NH M
BFVT45145M	BUTTERFLY VALVE TURN HANDLE 4.5 NH SW LH F X 4.5 M
BFVT50150M	BUTTERFLY VALVE TURN HANDLE 5 NH SW LH F X 5 NH M
BFVT60160M	BUTTERFLY VLV TURN HANDLE 6 NH SW LH F X 6 NH M

\* Special threads and custom configurations are available upon request.  
Please call to discuss your requirements.

# WATER TRANSFER

Part Number	Size & Description
<b>Holly Transfer Pipe</b>	
TT60A-P07	6" w/ 1.5" NH Swivel (Fire Engine Red powder coat -P07)
TT80A-P07	8" w/ 2.5" NH Swivel (Fire Engine Red powder coat -P07)
<b>Inline Jet Siphon</b>	
JSI40-P18-P09	4" Silvadillo -P09 powder coat body & Black powder coat adapters -P18
JSI45-P18-P09	4.5" Silvadillo -P09 powder coat body & Black powder coat adapters -P18
JSI50-P18-P09	5" Silvadillo -P09 powder coat body & Black powder coat adapters -P18
JSI60-P18-P09	6" Silvadillo -P09 powder coat body & Black powder coat adapters -P18
<b>Power Jet Siphon</b>	
JS40-P09	4" Silvadillo -P09 powder coat body
JS45-P09	4.5" Silvadillo -P09 powder coat body
JS50-P09	5" Silvadillo -P09 powder coat body
JS60-P09	6" Silvadillo -P09 powder coat body

JSI60



JS60



TT80A

SIZE	Part Number	Finishes <i>See page 3 for color chart and proper ordering information.</i>					
<b>4" Storz w/Lock x 4" NPT Rigid Female w/Cap</b>							
4" x 4"	SFDC44N	Chrome (-C)	Brass Plated (-B)	Powder Coat (-Pxx)	KBrite (-KBR)	Hardcoat (+H51)	Hardcoat (+H52)
<b>4" Storz w/Lock x 4" or 6" NPT Rigid Female w/Cap &amp; Screen</b>							
4" x 4"	SFDC44NS	Chrome (-C)	Brass Plated (-B)	Powder Coat (-Pxx)	KBrite (-KBR)	Hardcoat (+H51)	Hardcoat (+H52)
4" x 6"	SFDC46NS	Chrome (-C)	Brass Plated (-B)	Powder Coat (-Pxx)	KBrite (-KBR)	Hardcoat (+H51)	Hardcoat (+H52)
<b>5" Storz w/Lock x 4" NPT Rigid Female w/Cap &amp; Chain</b>							
5" x 4"	SFDC54N	Chrome (-C)	Brass Plated (-B)	Powder Coat (-Pxx)	KBrite (-KBR)	Hardcoat (+H51)	Hardcoat (+H52)
<b>5" Storz w/Lock x 4" NPT Rigid Female w/Cap &amp; Screen</b>							
5" x 4"	SFDC54NS	Chrome (-C)	Brass Plated (-B)	Powder Coat (-Pxx)	KBrite (-KBR)	Hardcoat (+H51)	Hardcoat (+H52)
<b>5" Storz w/Lock x 6" NPT Rigid Female w/Cap</b>							
5" x 6"	SFDC56N	Chrome (-C)	Brass Plated (-B)	Powder Coat (-Pxx)	KBrite (-KBR)	Hardcoat (+H51)	Hardcoat (+H52)
<b>5" Storz w/Lock x 6" NPT Rigid Female w/Cap &amp; Screen</b>							
5" x 6"	SFDC56N	Chrome (-C)	Brass Plated (-B)	Powder Coat (-Pxx)	KBrite (-KBR)	Hardcoat (+H51)	Hardcoat (+H52)
<b>5" Storz w/Lock x 6" Victaulic w/Cap</b>							
5" x 6"	SFDC561	Chrome (-C)	Brass Plated (-B)	Powder Coat (-Pxx)	KBrite (-KBR)	Hardcoat (+H51)	Hardcoat (+H52)
<b>5" Storz w/Lock x 6" Victaulic w/Cap &amp; Screen</b>							
5" x 6"	SFDC561S	Chrome (-C)	Brass Plated (-B)	Powder Coat (-Pxx)	KBrite (-KBR)	Hardcoat (+H51)	Hardcoat (+H52)
<b>6" Storz w/Lock x 6" NPT Rigid Female w/Cap &amp; No Chain &amp; Screen</b>							
6" x 6"	SFDC66NS	Chrome (-C)	Brass Plated (-B)	Powder Coat (-Pxx)	KBrite (-KBR)	Hardcoat (+H51)	Hardcoat (+H52)
<b>4" Storz x 4" NPT Rigid Female w/ Vented Cap &amp; Chain (Metal Face)</b>							
4" x 4"	SFDC44N-MF	Chrome (-C)	Brass Plated (-B)	Powder Coat (-Pxx)	KBrite (-KBR)	Hardcoat (+H51)	Hardcoat (+H52)
<b>4" Storz x 4" BSP Rigid Female w/ Vented Cap &amp; Chain (Metal Face)</b>							
4" x 4"	SZM4040-MF	Chrome (-C)	Brass Plated (-B)	Powder Coat (-Pxx)	KBrite (-KBR)	Hardcoat (+H51)	Hardcoat (+H52)
<b>5" Storz x 4" NPT Rigid Female w/ Vented Cap &amp; Chain (Metal Face)</b>							
5" x 4"	SFDC54N-MF	Chrome (-C)	Brass Plated (-B)	Powder Coat (-Pxx)	KBrite (-KBR)	Hardcoat (+H51)	Hardcoat (+H52)
<b>5" Storz x 5" BSP Rigid Female w/ Vented Cap &amp; Chain (Metal Face)</b>							
5" x 5"	SZM5050-MF	Chrome (-C)	Brass Plated (-B)	Powder Coat (-Pxx)	KBrite (-KBR)	Hardcoat (+H51)	Hardcoat (+H52)

SFDC46NS-P18



Add "-L" if ordering with custom laser etching

SIZE		Part Number	Finishes <i>See page 3 for color chart and proper ordering information.</i>			
<b>30° Elbows</b>						
<b>30° Elbow w/ 4" Storz x NPT Rigid Female w/o Cap</b>						
4" x 4"		SKE44NF	Chrome (-C)	Brass Plated (-B)	Powder Coat (-Pxx)	KBrite (KBR)
4" x 6"		SKE46NF				
<b>30° Elbow w/ 5" Storz x NPT Rigid Female w/ Cap</b>						
5" x 4"		SKE54NF	Chrome (-C)	Brass Plated (-B)	Powder Coat (-Pxx)	KBrite (KBR)
5" x 6"		SKE56NF				
<b>30° Elbow w/ 4" Storz x NPT Rigid Female w/ Cap</b>						
4" x 4"		SFDCEB44N	Chrome (-C)	Brass Plated (-B)	Powder Coat (-Pxx)	KBrite (KBR)
4" x 4"		SFDCEB44NS*				
4" x 6"		SFDCEB46N				
4" x 6"		SFDCEB46NS*				
<b>30° Elbow w/ 4" Storz x Victaulic Groove w/ Cap</b>						
4" x 4"		SFDCEB441	Chrome (-C)	Brass Plated (-B)	Powder Coat (-Pxx)	KBrite (KBR)
4" x 6"		SFDCEB461				
<b>30° Elbow w/ 5" Storz x Victaulic Groove w/ Cap</b>						
5" x 4"		SFDCEB541	Chrome (-C)	Brass Plated (-B)	Powder Coat (-Pxx)	KBrite (KBR)
5" x 6"		SFDCEB561				
<b>30° Elbow w/ 5" Storz x NPT Rigid Female w/ Cap</b>						
5" x 4"		SFDCEB54N	Chrome (-C)	Brass Plated (-B)	Powder Coat (-Pxx)	KBrite (KBR)
5" x 6"		SFDCEB54NS*				
5" x 6"		SFDCEB56N				
5" x 6"		SFDCEB56NS*				
<b>90° Elbows</b>						
<b>90° Elbow w/ 4" Storz x NPT Rigid Female w/o Cap</b>						
4" x 4"		SKEP44NR-B90	Chrome (-C)	Brass Plated (-B)	Powder Coat (-Pxx)	KBrite (KBR)
4" x 4"		SKEP44NR-C90				
4" x 4"		SKEP44NRS-C90*				
4" x 6"		SKEP46NR-C90				
<b>90° Elbow w/ 4" Storz x NPSH Swivel Rocker Lug Female w/o Cap</b>						
5" x 4"		SKEP46PRS*	Chrome (-C)	Brass Plated (-B)	Powder Coat (-Pxx)	KBrite (KBR)
<b>90° Elbow w/ 5" Storz x NPT Rigid Female w/o Cap</b>						
5" x 4"		SKEP54N-B90	Chrome (-C)	Brass Plated (-B)	Powder Coat (-Pxx)	KBrite (KBR)
5" x 4"		SKEP54NR-C90				
5" x 6"		SKEP56NR-B90				
5" x 6"		SKEP54NR-C90				
5" x 6"		SKEP56NRS-B90*				
<b>90° Elbow w/ 5" Storz x NPSH Swivel Female w/o Cap</b>						
5" x 4"		SKEP54PR-C90	Chrome (-C)	Brass Plated (-B)	Powder Coat (-Pxx)	KBrite (KBR)
5" x 6"		SKEP56PL-C90				
5" x 6"		SKEP56PR-C90				
<b>120° Elbows</b>						
<b>120° Elbow w/ 4" Storz x NPT Rigid Female w/o Cap</b>						
4" x 4"		SKEP44NRS-C120	Chrome (-C)	Brass Plated (-B)	Powder Coat (-Pxx)	KBrite (KBR)
5" x 4"		SKEP54NRS-C120				
<b>120° Elbow w/ 4" Storz x NPSH Swivel Female w/o Cap</b>						
5" x 4"		SKEP54PR-C120	Chrome (-C)	Brass Plated (-B)	Powder Coat (-Pxx)	KBrite (KBR)
5" x 4"		SKEP54PRS-C120*				
5" x 6"		SKEP56PR-C120				

SFDCEB54N-P09



SFDCEB54N-P18-P09



\* with screen

SIZE		Part Number	Finishes <i>See page 3 for color chart and proper ordering information.</i>			
<b>30° Elbows w/ Vented Cap</b>						
<b>30° Elbow w/ 4" Storz (Metal Face) x NPT Rigid Female</b>						
4" x 4"	SFDCEB44N-MF	Chrome (-C)	Brass Plated (-B)	Powder Coat (-Pxx)	KBrite (KBR)	
4" x 4"	SFDCEB44NS-MF*					
4" x 6"	SFDCEB46N-MF					
4" x 6"	SFDCEB46NS-MF*					
<b>30° Elbow w/ 5" Storz (Metal Face) x NPT Rigid Female</b>						
5" 6"	SFDCEB54N-MF	Chrome (-C)	Brass Plated (-B)	Powder Coat (-Pxx)	KBrite (KBR)	
5" 4"	SFDCEB54NS-MF*					
5" 6"	SFDCEB56N-MF					
5" 6"	SFDCEB56NS-MF*					
<b>30° Elbow w/ 5" Storz (Metal Face) x Victaulic Groove w/ Vented Cap</b>						
5" 6"	SFECEB561S-MF*	Chrome (-C)	Brass Plated (-B)	Powder Coat (-Pxx)	KBrite (KBR)	
<b>90° Elbows w/ Vented Cap &amp; Screen</b>						
<b>90° Elbow w/ 4" Storz (Metal Face) x NPSH Swivel Female</b>						
4" 4"	SFDCEB44PRS-B90-MF	Chrome (-C)	Brass Plated (-B)	Powder Coat (-Pxx)	KBrite (KBR)	
4" 6"	SFDCEB46PRS-B90-MF					
<b>90° Elbow w/ 5" Storz (Metal Face) x NPSH Swivel Female</b>						
5" 4"	SFDCEB54PRS-B90-MF	Chrome (-C)	Brass Plated (-B)	Powder Coat (-Pxx)	KBrite (KBR)	
5" 6"	SFDCEB56PRS-B90-MF					
<b>90° Elbow w/ 5" Storz (Metal Face) x NPT Swivel Female</b>						
5" 6"	SFDCEB56NRS-C90-MF	Chrome (-C)	Brass Plated (-B)	Powder Coat (-Pxx)	KBrite (KBR)	
<b>120° Elbows w/ Vented Cap &amp; Screen</b>						
<b>120° Elbow w/ 4" Storz (Metal Face) x NPSH Swivel Female</b>						
4" 4"	SFDCEB44PRS-C120-MF	Chrome (-C)	Brass Plated (-B)	Powder Coat (-Pxx)	KBrite (KBR)	
4" 6"	SFDCEB46PRS-C120-MF					
<b>120° Elbow w/ 5" Storz (Metal Face) x NPSH Swivel Female</b>						
5" 4"	SFDCEB54PRS-C120-MF	Chrome (-C)	Brass Plated (-B)	Powder Coat (-Pxx)	KBrite (KBR)	
5" 6"	SFDCEB56PRS-C120-MF					

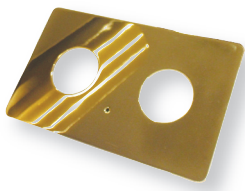
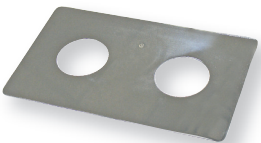
SFDCEB54N-MF



\* with screen

Part Number      Size & Description

2 Hole Chrome Plated		<b>Finishes</b> <i>See page 3 for color chart and proper ordering information.</i>
ESCH-2B	9X15(2) 4 3/16" HOLE STPIPE & AUTO SPRKLR ESCH	
ESCH-2BA	9X15(2) 4 3/16" HOLE AUTO SPRKLR ESCH PLATE	
ESCH-2BL	9X15(2) 4 3/16" HOLE BLANK ESCH PLATE	
ESCH-2BL	9X15(2) 4 3/16" HOLE BLANK ESCH PLATE	
ESCH-2301PT	9X15(2) 3" FIRE PUMP TEST ESCH 2WAY HORIZ	
ESCH-230PT	9X15(2) 3" FIRE PUMP TEST ESCH 2WAY HORIZ	
ESCH-235B	9X15(2) 3.5" HOLE STPIPE & AUTO SPRKLR ESCH	
ESCH-235BA	9X15(2) 3.5" HOLE AUTO SPRKLR ESCH	
ESCH-235BL	9X15(2) 3.5" HOLE BLANK ESCH PLATE	
ESCH-235BL	9X15(2) 3.5" HOLE BLANK ESCH PLATE	
ESCH-235RM	9X15(2) 3.5" ROOF MNFLD ESCH 2WAY HORIZ	
2 Hole Brass Plated		<b>Finishes</b> <i>See page 3 for color chart and proper ordering information.</i>
ESCH-2B	9X15(2) 4 3/16" HOLE STPIPE & AUTO SPRKLR ESCH	
ESCH-2BA	9X15(2) 4 3/16" HOLE AUTO SPRKLR ESCH PLATE	
ESCH-2BL	9X15(2) 4 3/16" HOLE BLANK ESCH PLATE	
ESCH-2BL	9X15(2) 4 3/16" HOLE BLANK ESCH PLATE	
ESCH-3BPT	9X20(3) 4 3/16" HOLE FIRE PUMP TEST ESC	
ESCH-3VA	9X20(3) 4 3/16" HOLE AUTO SPRKLR ESCH PLATE	
ESCH-3VBL	9X20(3) 4 3/16" HOLE BLANK ESCH PLATE VERT	
ESCH-235BL	9X15(2) 3.5" HOLE BLANK ESCH	
ESCH-235BL	9X15(2) 3.5" HOLE BLANK ESCH PLATE	
ESCH-235PT	9X15(2) 3.5" FIRE PUMP TEST ESCH 2WAY HORIZ	
ESCH-235VPT	9X15(2) 3.5" HOLE STPIPE & AUTO SPKR ESCH PL	
ESCH-235WH	9X15(2) 3.5" WALL HYDR ESCH 2WAY HORIZ	



Available in different Laser Engraving. Call for pricing and availability.

Part Number      Size & Description

4" x 18"	
AS5X18-B	ALUMINUM SLEEVE 4" X 18" [BRASS PLATED]
AS5X18-C	ALUMINUM SLEEVE 4" X 18" [CHROME]
AS5X18-KBR	ALUMINUM SLEEVE 4" X 18" [KBRITE]
AS5X18-Pxx	ALUMINUM SLEEVE 4" X 18" [POWDER COAT]
6" x 18"	
AS7X18-B	ALUMINUM SLEEVE 6" X 18" [BRASS PLATED]
AS7X18-C	ALUMINUM SLEEVE 6" X 18" [CHROME]
AS7X18-KBR	ALUMINUM SLEEVE 6" X 18" [KBRITE]
AS7X18-Pxx	ALUMINUM SLEEVE 6" X 18" [POWDER COAT]

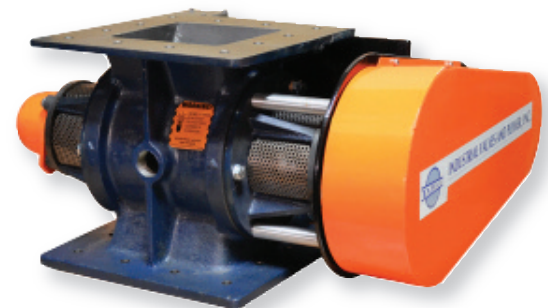


Part Number	Size & Description	Finishes <i>See page 3 for color chart and proper ordering information.</i>		
<b>2 Way</b>				
FDM4G3N-2B	FIRE DEPT MNFLD 4 GRV x (2) 3 NPT F BACK	Powder Coat (-Pxx)	Chrome (-C)	Brass Plated (-B)
FDM4G3N-2V	FIRE DEPT MNFLD 4 GRV x (2) 3 NPT F VERT			
FDM4N3N-2B	FIRE DEPT MNFLD 4 NPT x (2) 3 NPT F BACK			
FDM4N3N-2V	FIRE DEPT MNFLD 4 NPT x (2) 3 NPT F VERT			
FDM6N3N-2B	FIRE DEPT MNFLD 6 NPT F x (2) 3 NPT F BACK			
<b>3 Way</b>				
FDM6G3N-3B	FIRE DEPT MNFLD 6 GRV x (3) 3 NPT F BACK	Powder Coat (-Pxx)	Chrome (-C)	Brass Plated (-B)
FDM6G3N-3E	FIRE DEPT MNFLD 6 GRV x (3) 3 NPT F END			
FDM6G3N-3V	FIRE DEPT MNFLD 6 GRV x (3) 3 NPT F VERT			
FDM6N3N-3B	FIRE DEPT MNFLD 6 NPT F x (3) 3 NPT F BACK			
FDM6N3N-3E	FIRE DEPT MNFLD 6 NPT F x (3) 3 NPT F END			
FDM6N3N-3V	FIRE DEPT MNFLD 6 NPT x (3) 3 NPT F VERT			
<b>4 Way</b>				
FDM6G3N-4B	FIRE DEPT MNFLD 6 GRV x (4) 3 NPT F BACK	Powder Coat (-Pxx)	Chrome (-C)	Brass Plated (-B)
FDM6G3N-4E	FIRE DEPT MNFLD 6 GRV x (4) 3 NPT F END			
FDM6G3N-22V	FIRE DEPT MNFLD 6 GRV x (2X2) 3 NPT F VERT			
FDM6N3N-4E	FIRE DEPT MNFLD 6 NPT F x (4) 3 NPT F END			
FDM6N3N-4V	FIRE DEPT MNFLD 6 NPT F x (4) 3 NPT F VERT			
FDM6N3N-22V	FIRE DEPT MNFLD 6 NPT x (2X2) 3 NPT F VERT			
FDM63GN-4V	FIRE DEPT MNFLD 6 GRV x (4) 3 NPT F			
FDM6N3N-4B	FIRE DEPT MNFLD 6 NPT F x (4) 3 NPT F			
<b>6 Way</b>				
FDM8G3N-6V	FIRE DEPT MNFLD 8 GRV x (6) 3 NPT F VERT	Powder Coat (-Pxx)	Chrome (-C)	Brass Plated (-B)
FDM8G3N-6V	FIRE DEPT MNFLD 8 GRV x (6) 3 NPT F END			
FDM6G3N-6V	FIRE DEPT MNFLD 6 GRV x (6) 3 NPT F VERT			
FDM6N3N-6E	FIRE DEPT MNFLD 6 NPT F x (6) 3 NPT F VERT			



## ROTARY VALVES

Part Number	Size & Description
IST15CM-1	VALVE IVP, 6" CI BODY (ASA#150 BOLT HOLE PATTERN)
IST15TCR-1	VALVE IVP, 6" TUNGSTEN CARB COAT BODY, AR200 ROTOR
IST20CM-1	VALVE IVP, 8" CI BODY (SPECIAL BOLT HOLE PATTERN)
IST20TCR-1	VALVE IVP, 8" TUNGSTEN CARB COAT BODY, AR200 ROTOR
IST25TCR-1	VALVE IVP, 10" TUNGSTEN COAT BODY AR200 ROTOR, W/V
IST30CM-1	VALVE IVP, 12" CI BODY W/ ENDCAPS, STEEL ROTOR, W/
IST30TCD-1BASF	VALVE IVP, 12" TUNGSTEN CARB BODY, DURESIST SQUARE
IST35BIU	BODY, 14" CAST IRON, UNPAINTED
IST35CM-1	VALVE IVP, 14" CI BODY W/ ENDCAPS, STEEL ROTOR, W/



## General Product Warranty

---

Kochek Company LLC warrants the original purchase of its products to be free from manufacturing defects in material and workmanship.

- Fire Service & Waterworks products: 5 years
- Valves, Hoses & Nozzles: 1 year
- Valve fittings and Hose couplings: 5 years
- Irrigation Products: 1 year
- Irrigation fittings and couplings: 5 years

Kochek Company LLC's liability under this warranty shall be limited to the repair, replacement or credit (at our option). This warranty is intended to cover defects in manufacturing and does not apply to any defects caused by negligence, misuse, wear, unauthorized repair, improper assembly or lack of or improper maintenance.

The sole purpose of this warranty is to provide the buyer with the **EXCLUSIVE** remedy of free repair, replacement or credit for the defective parts in the manner provided herein. This exclusive remedy shall not be deemed to have failed of its essential purpose so long as the seller is willing and able to repair, replace or provide credit for the defective component properly upon receipt from you. Simply return the defective component, with proof of purchase and an explanation of the defect. Purchaser will bear the expense of shipping or delivering the returned component to our factory. Kochek Company LLC will bear the cost of returning any repaired or replaced items.

The purchaser needs to call **860.963.3377**, or visit <https://www.kochek.com/rga-rma-request-form/> in order to obtain an RMA prior to returning the product. The RMA must be marked clearly on the outside of the package being returned.

### **EXCLUSIONS:**

---

This warranty shall be **IN LIEU** of any other warranty, express or implied, including but not limited to any implied warranty of **MERCHANT ABILITY** or fitness of purpose.

**NO OTHER REMEDY INCLUDING BUT NOT LIMITED TO LOSS OR DAMAGE WHETHER DIRECT OR INDIRECT, INCIDENTAL OR CONSEQUENTIAL SHALL BE AVAILABLE.**

This warranty contains the entire warranty. It is the sole warranty. Any other agreements or representations, whether oral or written, are either merged herein or expressly cancelled. Kochek Company LLC neither assumes nor authorizes any person supposing to act on its behalf, to change nor to assume for it, any warranty or liability concerning its product.





**Spanners & Wrenches**



**Valves**



**Hydrant Converters**



**Nozzles**



**Hose Couplings**



**PVC Suction Hoses**



**Threaded Adapters**



**Elbows**



**Hoses**



**Strainers**



**Dry Hydrants**



**Caps & Plugs**